

Customer No.:
AVC Model: DS06025B12UP067

Rev.A.2

# SPECIFICATION FOR APPROVAL

## 1. SCOPE:

THIS SPECIFICATION DEFINES THE ELECTRICAL AND MECHANICAL CHARACTERISTICS OF THE DC BRUSHLESS AXIAL FLOW FAN.

## 2. CHARACTERS:

	ITEM	SPEC.
2-1.	RATED VOLTAGE	12 VDC
2-2.	OPERATION VOLTAGE	7.0 ~ 13.2 VDC
2-3.	RATED CURRENT (IN FREE AIR)	0.42 ( 0.70 MAX.) A (AVERAGE)
2-4.	RATED POWER (IN FREE AIR)	5.04 ( 8.40 MAX.) W
2-5.	SPEED (IN FREE AIR) (TEMPERATURE:25°C)	6800±10% R.P.M
2-6.	SPEED CONTROL TYPE	PWM CONTROL
2-7.	SIGNAL OUTPUT	FREQUENCY GENERATOR (FG)
2-8.	MAX. AIR FLOW (AT ZERO STATIC PRESSURE)	1.101 M <sup>3</sup> /MIN
		38.85 CFM
2-9.	MAX. AIR PRESSURE (AT ZERO FLOW)	12.54 mm-H <sub>2</sub> O
		0.494 inch-H <sub>2</sub> O
2-10.	ACOUSTICAL NOISE	45.9 ( 48.9 MAX.) dB-A

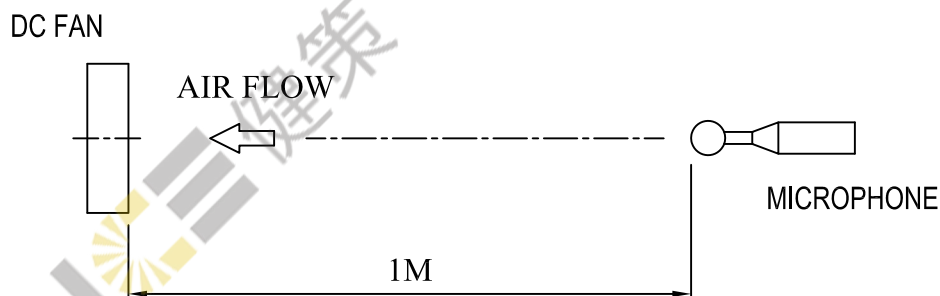


Customer No.:
AVC Model: DS06025B12UP067

- 2-11. INSULATION RESISTANCE — 10 MEGA OHM MIN. AT 500 VDC  
(BETWEEN FRAME AND (+) TERMINAL)
- 2-12. DIELECTRIC STRENGTH — 5 mA MAX. AT 500 VAC 60Hz ONE MINUTE,  
(BETWEEN FRAME AND (+) TERMINAL)
- 2-13. LIFE EXPECTANCE — 70,000 HOURS AT 40°C ROOM, AMBIENT 15%~65%RH
- 2-14. ROTATION — COUNTER-CLOCKWISE VIEWED FROM INLET
- 2-15. AIR FLOW DIRECTION — AIR EXHAUST OVER STRUT
- 2-16. INSULATION CLASS — UL: CLASS A
- 2-17. LEAD WIRE — UL: 1061 AWG# 26 , PWM : BLUE  
FG : YELLOW  
+ : RED  
- : BLACK

NOTE:

- A. THE VALUES WRITTEN IN PARENTHESIS "(")" ARE LIMITED SPEC.
- B. ACOUSTICAL NOISE MEASURING CONDITION:



NOISE IS MEASURED AT RATED VOLTAGE IN FREE AIR IN ACOUSTICAL CHAMBER WITH LARSON DAVIS TYPE 824S SOUND LEVEL METER.

- C. THE AIR FLOW AND AIR PRESSURE MEASURED AT RATED VOLTAGE IN DOUBLE CHAMBER IS MEASURED ACCORDING TO AMCA STANDARD 210-85.

Customer No.:
AVC Model: DS06025B12UP067

### 3. MECHANICAL

- 3-1. DIMENSION \_\_\_\_\_ SEE DIMENSION DRAWING
- 3-2. FRAME \_\_\_\_\_ THERMOPLASTIC PBT OF UL 94V-0
- 3-3. FAN BLADE \_\_\_\_\_ THERMOPLASTIC PBT OF UL 94V-0
- 3-4. BEARING SYSTEM \_\_\_\_\_ TWO BALL BEARINGS
- 3-5. WEIGHT \_\_\_\_\_ 55 g

### 4. ENVIRONMENTAL

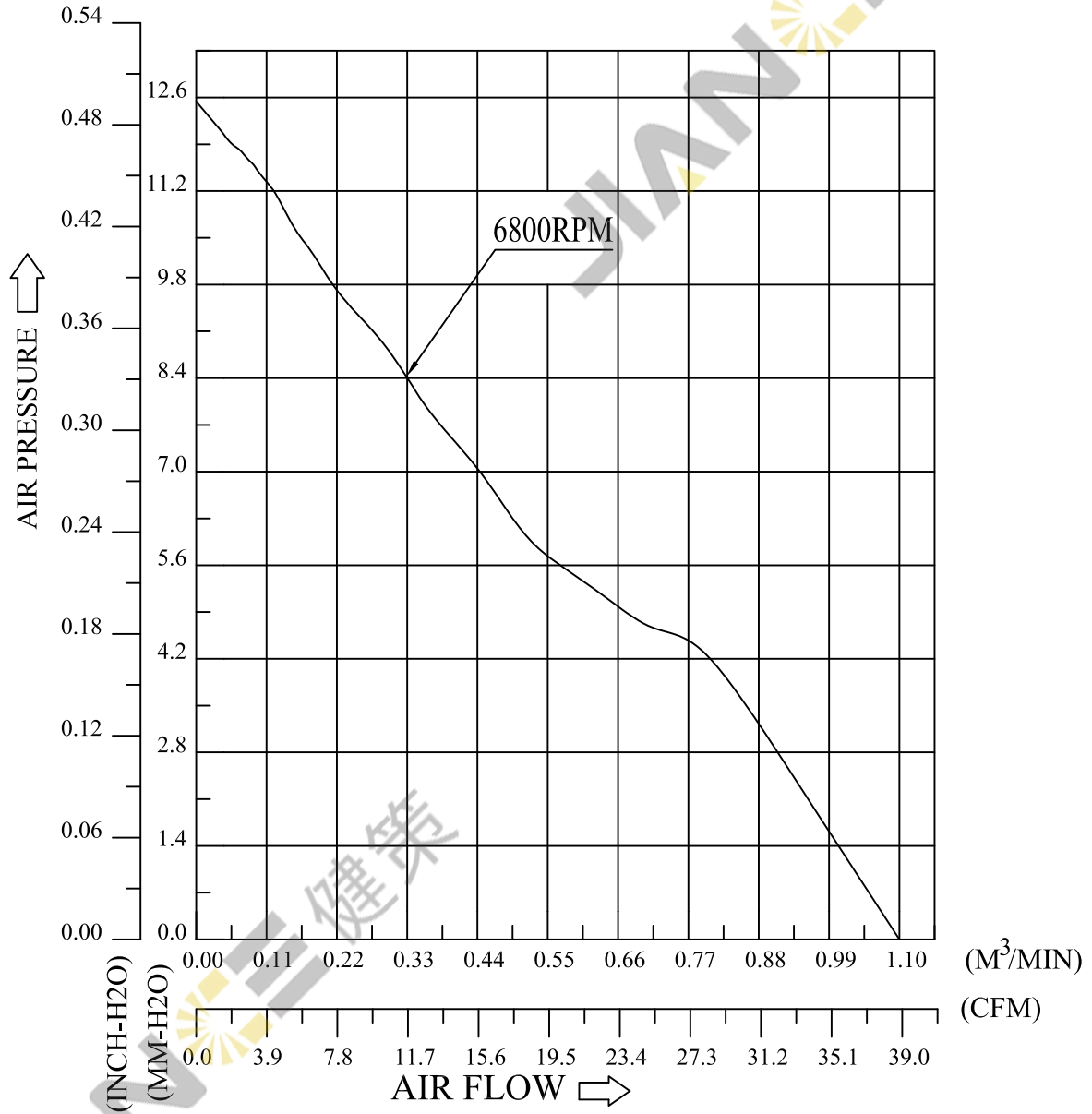
- 4-1. OPERATING TEMPERATURE \_\_\_\_\_ -10 TO +70 °C
- 4-2. STORAGE TEMPERATURE \_\_\_\_\_ -40 TO +75 °C
- 4-3. OPERATING HUMIDITY \_\_\_\_\_ 5 TO 90 % RH
- 4-4. STORAGE HUMIDITY \_\_\_\_\_ 5 TO 95 % RH
- 4-5. DROP TEST \_\_\_\_\_  
IN MINIMUM PACKAGING CONDITION FAN WITHSTAND EACH ONE  
DROP OF THREE FACES FROM 30cm DISTANCE HEIGHT ONTO 10mm  
THICKNESS OF WOODEN BOARD
- 4-6. VIBRATION TEST \_\_\_\_\_  
SINEWAVE  
DISPLACEMENT AMPLITUDE: 0.75 mm (EQUIVALENT 10G)  
FREQUENCY RANGE: 10Hz - 55 Hz / 30 SEC. 55Hz - 10 Hz / 30 SEC.  
LINEAR SCANNING 120 CYCLE  
ENDURANCE TIMER PER AXIS: 2 HOURS  
ORIENTATION: X,Y,Z
- 4-7. SHOCK TEST \_\_\_\_\_  
APPLY PEAK ACCELERATION 50 g AND KEEP DURATION OF THE  
PLUSES FOR 11MS (HALF SINE WAVE)
- 4-8. RoHS COMPLIANCE \_\_\_\_\_ SEE RoHS STANDARD

### 5. PROTECTION

- 5-1. LOCKED ROTOR PROTECTION \_\_\_\_\_  
IMPEDANCE OF MOTOR WINDING PROTECTS MOTOR FROM DAMAGE IN  
72 HOURS OF LOCKED ROTOR CONDITION AT THE RATED VOLTAGE
- 5-2. POLARITY PROTECTION \_\_\_\_\_  
BE CAPABLE OF WITHSTANDING IF REVERSE CONNECTION FOR  
POSITIVE AND NEGATIVE LEADS

Customer No.:	
AVC Model:	DS06025B12UP067

### 6. P & Q CURVE

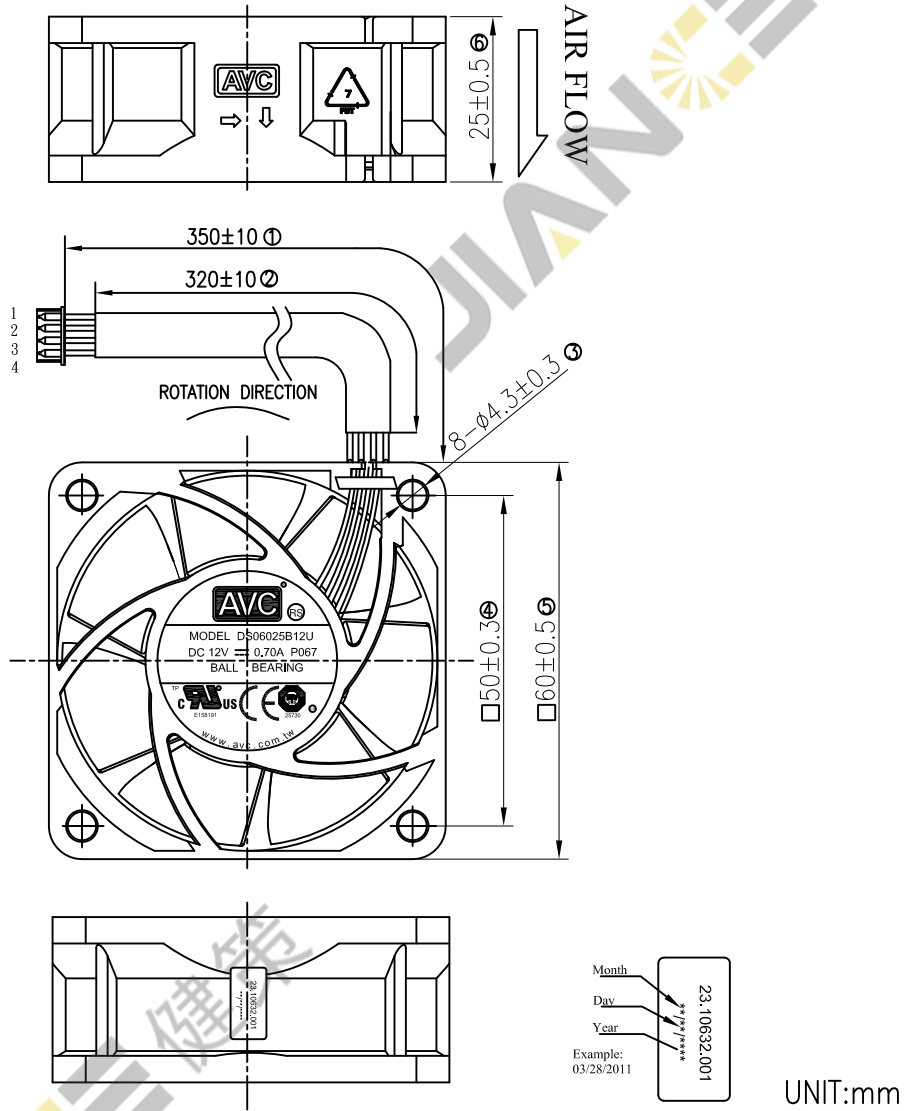


\* TEST CONDITION:

INPUT VOLTAGE	——	OPERATION VOLTAGE
TEMPERATURE	——	ROOM TEMPERATURE
HUMIDITY	——	65%RH

Customer No.:	
AVC Model:	DS06025B12UP067

7. DIMENSION DRAWING



NOTES:

- LEAD WIRES: PVC WIRES UL1061 AWG#26  
 PIN1: BLUE WIRE ..... (PWM)  
 PIN2: YELLOW WIRE ..... (FG)  
 PIN3: RED WIRE ..... (+)  
 PIN4: BLACK WIRE ..... (-)
- CONNECTOR:  
 HOUSING: JWT A1251H02-4P OR EQUIVALENT(WHITE)  
 TERMINAL: JWT A1251TOP-2 OR EQUIVALENT

Customer No.:	
AVC Model:	DS06025B12UP067

## 8. SPEED CONTROL FUNCTION

### 8-1. PWM SIGNAL DESCRIPTION :

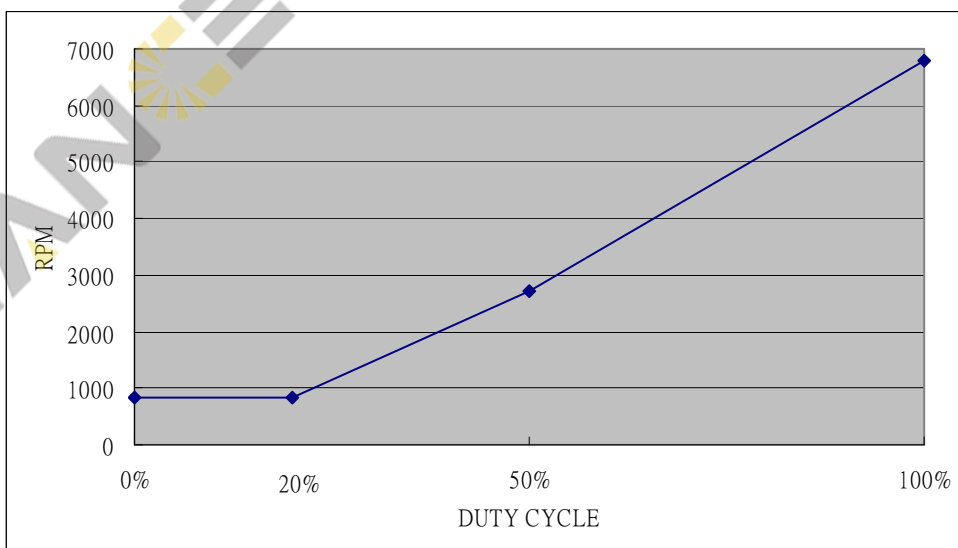
1. CONTROL SIGNAL: PWM CONTROL
2. THE RANGE OF SIGNAL VOLTAGE: LOW LEVEL VOLTAGE: MAX. <0.6V  
HIGH LEVEL VOLTAGE: MIN. >2.6V , MAX.<12V
3. THE FREQUENCY OF PWM SINGAL SHALL BE ACCEPTED AT 21KHz~28KHz
4. MAX. SINK CURRENT: 8mA
5. INPUT IMPEDANCE : 10K OHM MIN.

### 8-2. FAN SPEED CONTROL DESCRIPTION

1. FAN INPUT VOLTAGE ( POSITIVE ) : 12VDC
2. PWM FREQUENCY : 25KHz
3. THE FAN SPEED WILL SPIN AT MAXIMUM WHEN THE DUTY CYCLE IS 100%.
4. THE FAN SPEED WILL SPIN AT MINIMUM WHEN THE DUTY CYCLE IS 0%.
5. THE FAN SPEED WILL SPIN AT 850~6800 RPM WHEN THE DUTY CYCLE IS 0~100%.
6. THE FAN SPEED WILL SPIN AT MAXIMUM WHEN THE LEAD WIRE OF PWM SIGNAL DISCONNECTED.
7. THE FAN WILL BE ABLE TO START WHEN THE DUTY CYCLE IS 0% .

### 8-3. PWM DUTY CYCLE VS. RPM

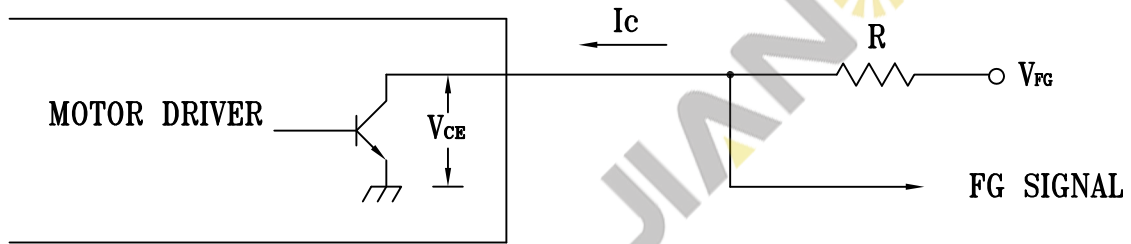
TEMPERATURE:25°C	
DUTY CYCLE %	R.P.M
0~20	850±250
50	2700±270
100	6800±680



Customer No.:
AVC Model: DS06025B12UP067

## 9. FREQUENCY GENERATOR (FG) SIGNAL

### 9-1. SCHEMATIC:



### CAUTION:

THE LEAD WIRE OF FG SIGNAL CAN NOT TOUCH  
THE LEAD WIRE OF POSITIVE OR NEGATIVE.

### 9-2. SIGNAL SPECIFICATION:

OUTPUT TYPE: OPEN COLLECT

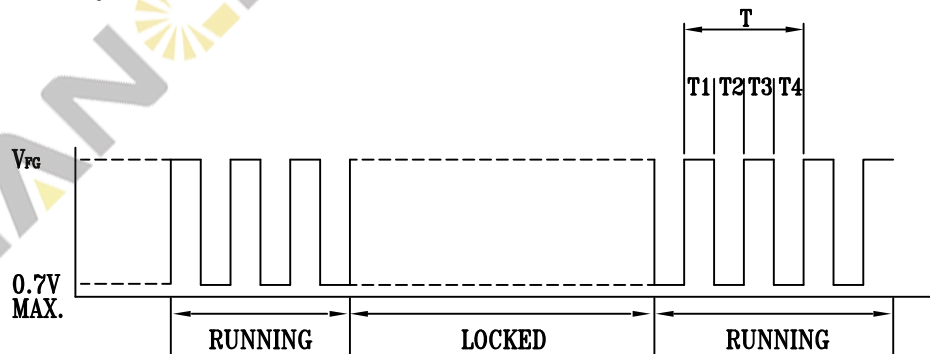
$V_{FG}$  MAXIMUM VOLTAGE = 13.2V

$I_c$  MAXIMUM CURRENT = 5mA

LOW LEVEL VOLTAGE = 0.7V MAX.

$$R \geq V_{FG} / I_c$$

### 9-3. FREQUENCY GENERATOR WAVEFORM:



$$T = T_1 + T_2 + T_3 + T_4 = 60/N \text{ (Sec)}$$

N: SPEED (RPM)

## RoHS STANDARD

HAZARDOUS SUBSTANCES		ALLOWABLE CONTENT (wt%)	REMARK
HEAVY METALS	CADMIUM (Cd) AND ITS COMPOUNDS	< 0.01 wt% ( < 100 ppm )	DIRECTIVE 2002/95/EC
	LEAD (Pb) AND ITS COMPOUNDS	< 0.1 wt% ( < 1000 ppm )	DIRECTIVE 2002/95/EC
	MERCURY (Hg) AND ITS COMPOUNDS	< 0.1 wt% ( < 1000 ppm )	DIRECTIVE 2002/95/EC
	HEXA VALENT CHROMIUM (CHROMIUM VI) (Cr <sup>6+</sup> ) AND ITS COMPOUNDS	< 0.1 wt% ( < 1000 ppm )	DIRECTIVE 2002/95/EC
BROMINATED FLAME RETARDANTS	POLYBROMINATED BIPHENYLS (PBBs)	< 0.1 wt% ( < 1000 ppm )	DIRECTIVE 2002/95/EC
	POLYBROMINATED DIPHENYL ETHERS (PBDEs)	< 0.1 wt% ( < 1000 ppm )	DIRECTIVE 2002/95/EC





Product Service

# CERTIFICATE

No. B 09 12 25730 183

**Holder of Certificate:** Asia Vital Components Co.,Ltd.  
7F-3, No.24, Wu-Chuan 2 Rd.,  
Hsin Chuang City, Taipei  
TAIWAN

**Certification Mark:**



**Product:** Component fan

The product was tested on a voluntary basis and complies with the essential requirements. The certification mark shown above can be affixed on the product. It is not permitted to alter the certification mark in any way. In addition the certification holder must not transfer the certificate to third parties. See also notes overleaf.

**Test report no.:** 6121009127801

**Date,** 2009-12-17

Page 1 of 3

( Bill Lin )

*Bill Lin*



ZERTIFIKAT ◆ CERTIFICATE ◆ 認証証書 ◆ СЕРТИФИКАТ ◆ CERTIFICADO ◆ CERTIFICAT



# CERTIFICATE

No. B 09 12 25730 183

## Model(s):

XY06010, XY06013, XY06015, XY06020, XY06025,  
XY06038, XY06076, XY06510, XY06512 Series

Difference:

X Y 060 10 Z 05 M -001

A B C D E F G H

A - Fan type

"X" can be B, C, D or 2

B = Blower Fan; C = Cross Fan;

D = Axial Fan; 2 = Axial Fan generation

B - Internal Control Code

"Y" can be A-Z or 0-9

C - Frame Size

060 = 6.0 cm; 065 = 6.5 cm

D - Frame Thickness

10 = 1.0 cm; 12 = 1.2 cm; 13 = 1.3 cm;

15 = 1.5 cm; 20 = 2.0 cm; 25 = 2.5 cm;

38 = 3.8 cm; 76 = 7.6 cm

E - Bearing Type

"Z" can be A, B, C, G, S, T, R or P

A = One Ball Bearing B = Two Ball Bearing

C = Ceramic Bearing G = Air Bearing

S = Sleeve Bearing T = One Ball & one Sleeve

R = Hydraulic Bearing P = Power Life

F - Input Voltage

05 = 5Vdc; 12 = 12Vdc; 24 = 24Vdc; 48 = 48Vdc

G - Speed of Fan

G = Extremely High Speed

F = Super High Speed S = Ultra High Speed

U = Extra High Speed H = High Speed

M = Medium Speed L = Low Speed

E = Extra low speed X = Ultra low speed

H - Internal Control Code/Control Type/Signal Output

V=ABCD where A, B, C, D can be A-Z, 0-9 or "-"

Special note:

When first code A denote for P, S, V or A

P = PWM Controller ; S = Sensor Controller

V = Voltage Controller; A = PWM +Sensor Controller

When second code B denote for F or R

F = FG (Frequency Generator or Tach Output)

R = RD (Rotation Detector)

## Parameters:

Rated input voltage: 5, 12, 24 or 48 Vdc

Rated input current: See attachment

Protection class: III

Max. ambient temperature: 70°C

Degree of protection  
against ingress of liquids: Ordinary

Remark: When installing, all requirements of below  
mentioned test standards must be fulfilled.

## Tested according to:

EN 60950-1/A11:2009

## Production Facility(ies):

68566, 47171, 69403

Page 2 of 3

Bill L = -



Taiwan

The following models of Component Fan "XY06010, XY06013, XY06015, XY06020, XY06025, XY06038, XY06076, XY06510, XY06512 Series" will be covered by above certificate:

Model-#	DC Ratings		Model-#	DC Ratings		Model Description:							
XY06010Z05MV	5Vdc	0.50A	*XY06025Z24UV	24Vdc	0.30 or 0.40A	X	Y	060	10	Z	05	M	-001
XY06010Z05LV	5Vdc	0.35A	*XY06025Z24HV	24Vdc	0.25 or 0.30A	A	B	C	D	E	F	G	H
XY06010Z05EV	5Vdc	0.20A	*XY06025Z24MV	24Vdc	0.20 or 0.25A	A - Fan type							
			*XY06025Z24LV	24Vdc	0.15 or 0.20A	"X" can be B, C, D or 2							
XY06010Z12UV	12Vdc	0.40A	XY06025Z24EV	24Vdc	0.15 A	B = Blower Fan C = Cross Fan							
XY06010Z12HV	12Vdc	0.29A				D = Axial Fan 2 = Axial Fan Generation							
XY06010Z12MV	12Vdc	0.20A	XY06038Z12GV	12Vdc	2.20A	B - Internal Control Code							
XY06010Z12LV	12Vdc	0.17A	XY06038Z12SV	12Vdc	2.85 or 3.60 or 1.00 or 1.80A	"Y" can be A-Z or 0-9							
XY06010Z12EV	12Vdc	0.10A	XY06038Z12UV	12Vdc	1.83 or 3.00 or 0.80 or 1.40A	C - Frame Size							
*XY06010Z24UV	24Vdc	0.25A	XY06038Z12HV	12Vdc	1.20 or 2.40 or 0.70 or 1.16A	060 = 6.0 cm 065 = 6.5 cm							
*XY06010Z24HV	24Vdc	0.20A	XY06038Z12MV	12Vdc	0.87 or 1.80 or 0.50 or 0.96A	D - Frame Thickness							
*XY06010Z24MV	24Vdc	0.15A	XY06038Z12LV	12Vdc	0.60 or 1.28 or 0.45 or 0.72A	10 = 1.0 cm 12 = 1.2 cm 13 = 1.3 cm							
*XY06010Z24LV	24Vdc	0.10A	XY06038Z12EV	12Vdc	0.45 or 0.90 or 0.40A	15 = 1.5 cm 20 = 2.0 cm 25 = 2.5 cm							
XY06013Z12UV	12Vdc	0.40A	XY06038Z12XV	12Vdc	0.38 or 0.60 or 0.30A	E - Bearing Type							
XY06013Z12HV	12Vdc	0.30A				"Z" can be A, B, C, G, S, T, R or P							
XY06013Z12MV	12Vdc	0.20A	XY06038Z24SV	24Vdc	1.32 or 0.90A	A = One Ball Bearing							
XY06013Z12LV	12Vdc	0.15A	XY06038Z24UV	24Vdc	0.87A	B = Two Ball Bearing							
XY06013Z12EV	12Vdc	0.10A	XY06038Z24UUV	24Vdc	0.87A	C = Ceramic Bearing							
XY06015Z05FV	5Vdc	0.67A	XY06038Z24HV	24Vdc	0.54 or 0.92 or 0.55A	G = Air Bearing							
XY06015Z05SV	5Vdc	0.54A	XY06038Z24MV	24Vdc	0.50 or 0.70 or 0.40A	S = Sleeve Bearing							
XY06015Z05UV	5Vdc	0.48 or 0.65A	XY06038Z24LV	24Vdc	0.38 or 0.54 or 0.30A	T = One Ball and One Sleeve							
XY06015Z05HV	5Vdc	0.42 or 0.50 or 0.35A				R = Hydraulic Bearing							
XY06015Z05MV	5Vdc	0.35 or 0.36 or 0.28A	XY06038Z24EV	24Vdc	0.27 or 0.42A	P = Power Life							
XY06015Z05LV	5Vdc	0.20 or 0.30 or 0.15A	XY06038Z24XV	24Vdc	0.23 or 0.29A	F - Input Voltage							
XY06015Z05EV	5Vdc	0.15 or 0.24A				05 = 5Vdc 12 = 12Vdc							
XY06015Z05XV	5Vdc	0.18A	XY06038Z48SV	48Vdc	0.56 or 0.57A	24 = 24Vdc 48 = 48Vdc							
XY06015Z12GV	12Vdc	0.67A	XY06038Z48UV	48Vdc	0.45A	G - Speed of Fan							
XY06015Z12FV	12Vdc	0.60A	XY06038Z48HV	48Vdc	0.35 or 0.32A	G = Extremely High Speed							
XY06015Z12UV	12Vdc	0.48A	XY06038Z48MV	48Vdc	0.26 or 0.24A	F = Super High Speed							
XY06015Z12HV	12Vdc	0.35 or 0.42A	XY06038Z48LV	48Vdc	0.20A	S = Ultra High Speed							
XY06015Z12MV	12Vdc	0.18 or 0.30 or 0.28A	XY06076Z12UV	12Vdc	3.00A	U = Extra High Speed							
XY06015Z12LV	12Vdc	0.14 or 0.24 or 0.15A				H = High Speed							
XY06015Z12EV	12Vdc	0.11 or 0.18A	XY06510Z12HV	12Vdc	0.30A	M = Medium Speed							
XY06015Z12XV	12Vdc	0.12A	XY06510Z12MV	12Vdc	0.20A	L = Low Speed							
XY06020Z12SV	12Vdc	0.45A	XY06510Z12LV	12Vdc	0.22A	E = Extra low speed							
XY06020Z12UV	12Vdc	0.35A	XY06512Z05HV	5Vdc	0.65A	X = Ultra low speed							
XY06020Z12HV	12Vdc	0.23A				H - Internal Control Code/Control Type/Signal Output							
XY06020Z12MV	12Vdc	0.15A				V=ABCD where A,B,C,D may be A-Z, 0-9 or "-"							
XY06020Z12LV	12Vdc	0.10A				Special note:							
XY06020Z12EV	12Vdc	0.08A				When first code A denote for P, S, V or A							
XY06025Z12SV	12Vdc	0.35 or 1.20 or 0.60A				P = PWM Controller S = Sensor Controller							
XY06025Z12UV	12Vdc	0.26 or 0.57 or 0.70A				V = Voltage Controller A = PWM + Sensor Controller							
XY06025Z12HV	12Vdc	0.20 or 0.33 or 0.60A				When second code B denote for F or R							
XY06025Z12MV	12Vdc	0.15 or 0.24 or 0.40A				F= FG (Frequency Generator or Tach Output)							
XY06025Z12LV	12Vdc	0.11 or 0.12 or 0.30A				R= RD (Rotation Detector)							
XY06025Z12EV	12Vdc	0.10 or 0.20A											
XY06025Z12XV	12Vdc	0.08 or 0.10A											

Note: above "X" can be B, C, D or 2; "Y" can be A-Z or 0-9; "Z" can be A, B, C, G, S, T, R or P; "V" can be ABCD where A,B,C,D may be A-Z, 0-9 or "-"

Remark: Marked "\*" are the additional items

Date: 2011-06-23



Testing Laboratory

Bill Lin

Bill Lin



Product Service

# Attestation of Compliance

No. E8N 09 08 25730 148

**Holder of Certificate:** Asia Vital Components Co.,Ltd.

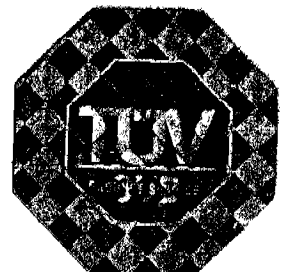
7F-3, No.24, Wu-Chuan 2 Rd.,  
Hsin Chuang City, Taipei  
TAIWAN

**Name of Object:** Component fan

This Attestation of Compliance is issued according to the Directive 2004/108/EC relating to electromagnetic compatibility on a voluntary basis. It confirms that the listed apparatus complies with all essential requirements of the EMC directive and applies only to the sample and its technical documentation submitted to TÜV SÜD Product Service GmbH for testing and certification. See also notes overleaf.

**Test report no.:** 612860919101

**Date,** 2009-08-14



**CE** After preparation of the necessary technical documentation as well as the EC conformity declaration the required CE marking can be affixed on the product. Other relevant directives have to be observed.

Page 1 of 4

ZERTIFIKAT ◆ CERTIFICATE ◆ 認証証書 ◆ CERTIFICADO ◆ CERTIFICAT



## Attestation of Compliance

No. E8N 09 08 25730 148

### Model(s):

XY03, XY06, XY07, XY08 Series

#### Difference:

D A 070 15 B 12 U -FAR

A B C D E F G H

#### A - Fan type

D : Axial FAN      2 : Axial Fan Generation

B : BLOWER      C : Cross FAN

#### B - Internal Control Code

Y May be A-Z or 0-9

#### C - Frame Size

030 : 3.0 cm; 035 : 3.5 cm; 036 : 3.6 cm

038 : 3.8 cm; 060 : 6.0 cm; 065 : 6.5 cm

070 : 7.0 cm; 075 : 7.5 cm; 076 : 7.6 cm

080 : 8.0 cm; 088 : 8.8 cm

#### D - Frame Thickness

10 : 1.0 cm; 12 : 1.2 cm; 13 : 1.3 cm

15 : 1.5 cm; 20 : 2.0 cm; 25 : 2.5 cm

28 : 2.8 cm; 30 : 3.0 cm; 38 : 3.8 cm

76 : 7.6 cm; 80 : 8.0 cm

#### E - Bearing Type

A : One Ball Bearing      B : Two Ball Bearing

C : Ceramic Bearing      G : Air Bearing

S : Sleeve Bearing      T : One Ball & Sleeve

R : Hydraulic Bearing      P : Power Life

#### F - Input Voltage

05 : 5Vdc; 12 : 12Vdc; 24 : 24Vdc

34 : 34Vdc; 48 : 48Vdc

#### G - Speed of Fan

G : Extremely High Speed

F : Super High Speed      S : Ultra High Speed

U : Extra High Speed      H : High Speed

M : Medium Speed      L : Low Speed

E : Extra low speed      X : Ultra low speed

#### H - Internal Control Code/Control Type/Signal Output

V=ABCD where A, B, C, D can be A-Z, 0-9 or "-"

#### Special note:

When first code A denote for P, S, V or A

P : PWM Controller

S : Sensor Controller

V : Voltage Controller

A : PWM +Sensor Controller

When second code B denote for F or R

F : FG (Frequency Generator or Tach Output)

R : RD (Rotation Detector)

### Description of Object:

Rated input(s):

5, 12, 24, 34 or 48 Vdc

Rated input current:

See attachments

Protection class:

III

### Tested according to:

EN 55022/A1:2007

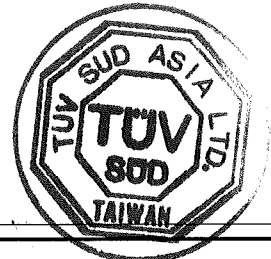
EN 55024/A2:2003



Taiwan

Based on the tests performed following models of the DC Fan "XY03, XY06, XY07, XY08 Series" are covered:

Model-#	DC Ratings		Model-#	DC Ratings		Model Description:
XY03010Z05SV	5Vdc	0.23A				<b>D</b> <b>A</b> <b>070</b> <b>15</b> <b>B</b> <b>12</b> <b>U</b> <b>-FAR</b> <b>A</b> <b>B</b> <b>C</b> <b>D</b> <b>E</b> <b>F</b> <b>G</b> <b>H</b>
XY03010Z05UV	5Vdc	0.17A	XY06020Z12SV	12Vdc	0.45A	
XY03010Z05HV	5Vdc	0.14A	XY06020Z12UV	12Vdc	0.35A	
XY03010Z05MV	5Vdc	0.11A				
			XY06020Z12HV	12Vdc	0.23A	<b>A – Fan Type</b> D : Axial Fan 2 : Axial Fan Generation B : Blower C : Cross FAN
XY03010Z12UV	12V	0.09A	XY06020Z12MV	12Vdc	0.15A	
XY03010Z12HV	12V	0.08A	XY06020Z12LV	12Vdc	0.10A	<b>B – Internal Control Code</b> Y May be A-Z or 0-9
XY03010Z12MV	12V	0.07A	XY06020Z12EV	12Vdc	0.08A	
XY03010Z12LV	12V	0.06A				<b>C – Frame Size</b> 030 : 3.0cm                      070 : 7.0cm 035 : 3.5cm                      075 : 7.5cm 036 : 3.6cm                      076 : 7.6cm 038 : 3.8cm                      080 : 8.0cm 060 : 6.0cm                      088 : 8.8cm 065 : 6.5cm
			XY06025Z12SV	12Vdc	0.35 or 1.20 or 0.60A	
			XY06025Z12UV	12Vdc	0.26 or 0.57 or 0.70A	<b>D – Frame Thickness</b> 10 : 1.0cm                      28 : 2.8cm 12 : 1.2cm                      30 : 3.0cm 13 : 1.3cm                      38 : 3.8cm 15 : 1.5cm                      76 : 7.6cm 20 : 2.0cm                      80 : 8.0cm  25 : 2.5cm
XY03510Z05FV	5Vdc	0.21A	XY06025Z12HV	12Vdc	0.20 or 0.33 or 0.60A	
XY03510Z05SV	5Vdc	0.18A	XY06025Z12LV	12Vdc	0.15 or 0.24 or 0.40A	<b>E – Bearing Type</b> A : One Ball Bearing B : Two Ball Bearing C : Ceramic Bearing G : Air Bearing S : Sleeve Bearing T : One Ball and One Sleeve R : Hydraulic Bearing P : Power Life
XY03510Z05UV	5Vdc	0.14 or 0.25A	XY06025Z12MV	12Vdc	0.11 or 0.12 or 0.30A	
XY03510Z05HV	5Vdc	0.11 or 0.44 or 0.20A	XY06025Z12EV	12Vdc	0.10 or 0.20A	<b>F – Input Voltage</b> 5 : 5Vdc 12 : 12Vdc 24 : 24Vdc 34 : 34Vdc 48 : 48Vdc
XY03510Z05MV	5Vdc	0.08 or 0.34 or 0.15A	XY06025Z12XV	12Vdc	0.08 or 0.10A	
XY03510Z05LV	5Vdc	0.07 or 0.20 or 0.10A				<b>G – Speed of Fan</b> G : Extremely High Speed F : Super High Speed S : Ultra High Speed U : Extra High Speed H : High Speed M : Medium Speed L : Low Speed E : Extra low speed X : Ultra low speed
XY03510Z05EV	5Vdc	0.06 or 0.12A	XY06025Z24UV	24Vdc	0.40A	
XY03510Z05XV	5Vdc	0.08A	XY06025Z24HV	24Vdc	0.30A	<b>H – Internal Control Code/ Control Type/ Signal Output</b> V = ABCD where A,B,C,D may be A-Z, 0-9 or “-“
			XY06025Z24MV	24Vdc	0.25A	
			XY06025Z24LV	24Vdc	0.15A	<b>Special note:</b> When first code A denote for P, S, V or A P : PWM Controller S : Sensor Controller V : Voltage Controller A : PWM + Sensor Controller When second code B denote for F or R F: FG (Frequency Generator or Tach Output) R: RD (Rotation Detector)
XY03510Z12FV	12Vdc	0.12A	XY06025Z24XV	24Vdc	0.15A	
XY03510Z12SV	12Vdc	0.11A				
XY03510Z12UV	12Vdc	0.09 or 0.36A	XY06038Z12GV	12Vdc	2.20A	
XY03510Z12HV	12Vdc	0.08 or 0.27A	XY06038Z12SV	12Vdc	2.85 or 3.60 or 1.00 or 1.80A	
XY03510Z12MV	12Vdc	0.06 or 0.17A	XY06038Z12UV	12Vdc	1.83 or 3.00 or 0.80A or 1.40A	
XY03510Z12LV	12Vdc	0.12A	XY06038Z12HV	12Vdc	1.20 or 2.40 or 0.70 or 1.16A	
XY03510Z12EV	12Vdc	0.09A	XY06038Z12MV	12Vdc	0.87 or 1.80 or 0.50 or 0.96A	
			XY06038Z12LV	12Vdc	0.60 or 1.28 or 0.45 or 0.72A	
XY03628Z12FV	12Vdc	1.00A	XY06038Z12EV	12Vdc	0.45 or 0.90 or 0.40A	
XY03628Z12SV	12Vdc	0.80A	XY06038Z12XV	12Vdc	0.38 or 0.60 or 0.30A	
XY03628Z12UV	12Vdc	0.53A				
XY03628Z12HV	12Vdc	0.41A	XY06038Z24SV	24Vdc	1.32A or 0.90A	
			XY06038Z24UV	24Vdc	0.87A	
XY03828Z12SV	12Vdc	1.00A	XY06038Z24HV	24Vdc	0.54 or 0.92 or 0.55A	
XY03828Z12UV	12Vdc	0.82A				
XY03828Z12HV	12Vdc	0.50A	XY06038Z24MV	24Vdc	0.50 or 0.70 or 0.40A	
XY03828Z12MV	12Vdc	0.30A	XY06038Z24LV	24Vdc	0.38 or 0.54 or 0.30A	
XY03828Z12LV	12Vdc	0.21A	XY06038Z24EV	24Vdc	0.27 or 0.42A	
			XY06038Z24XV	24Vdc	0.23 or 0.29A	
XY06010Z05MV	5Vdc	0.50A				
XY06010Z05LV	5Vdc	0.35A	XY06038Z48SV	48Vdc	0.56 or 0.57A	
XY06010Z05EV	5Vdc	0.20A	XY06038Z48UV	48Vdc	0.45A	
			XY06038Z48HV	48Vdc	0.35 or 0.32A	
XY06010Z12UV	12Vdc	0.40A	XY06038Z48MV	48Vdc	0.26 or 0.24A	
XY06010Z12HV	12Vdc	0.29A	XY06038Z48LV	48Vdc	0.20A	
XY06010Z12MV	12Vdc	0.20A				
XY06010Z12LV	12Vdc	0.17A	XY06076Z12UV	12Vdc	3.00A	
XY06010Z12EV	12Vdc	0.10A				
*XY06010Z24UV	24Vdc	0.25A	XY06510Z12HV	12Vdc	0.30A	
*XY06010Z24HV	24Vdc	0.20A	XY06510Z12MV	12Vdc	0.20A	
*XY06010Z24MV	24Vdc	0.15A	XY06510Z12LV	12Vdc	0.22A	
*XY06010Z24LV	24Vdc	0.10A				
XY06013Z12UV	12Vdc	0.40A	XY06512Z05HV	5Vdc	0.65A	
XY06013Z12HV	12Vdc	0.30A				
XY06013Z12MV	12Vdc	0.20A	XY07015Z05MV	5Vdc	0.50A	
XY06013Z12LV	12Vdc	0.15A	XY07015Z05LV	5Vdc	0.30A	
XY06013Z12EV	12Vdc	0.10A	XY07015Z05EV	5Vdc	0.20A	
			XY07015Z05XV	5Vdc	0.15A	
XY06015Z05FV	5Vdc	0.67A				
XY06015Z05SV	5Vdc	0.54A	XY07015Z12SV	12Vdc	0.45A	
XY06015Z05UV	5Vdc	0.48 or 0.65A	XY07015Z12UV	12Vdc	0.70 or 0.40A	
XY06015Z05HV	5Vdc	0.42 or 0.50 or 0.35A	XY07015Z12HV	12Vdc	0.50 or 0.25A	
XY06015Z05MV	5Vdc	0.35 or 0.36 or 0.28A	XY07015Z12MV	12Vdc	0.40 or 0.20A	
XY06015Z05LV	5Vdc	0.20 or 0.30 or 0.15A	XY07015Z12LV	12Vdc	0.30 or 0.10A	
XY06015Z05EV	5Vdc	0.15 or 0.24A	XY07015Z12EV	12Vdc	0.20A	
XY06015Z05XV	5Vdc	0.18A				
			XY07020Z12UV	12Vdc	0.70A	
XY06015Z12GV	12Vdc	0.67A	XY07020Z12HV	12Vdc	0.33 or 0.50A	
XY06015Z12FV	12Vdc	0.60A	XY07020Z12MV	12Vdc	0.30 or 0.40A	
XY06015Z12SV	12Vdc	0.48A	XY07020Z12LV	12Vdc	0.20 or 0.30A	
XY06015Z12UV	12Vdc	0.35 or 0.42A	XY07020Z12EV	12Vdc	0.14 or 0.20A	
XY06015Z12HV	12Vdc	0.24 or 0.36 or 0.35 or 0.51A				
XY06015Z12MV	12Vdc	0.18 or 0.30 or 0.28A	XY07020Z12UV	12Vdc	0.70A	
XY06015Z12LV	12Vdc	0.14 or 0.24 or 0.15A	XY07020Z12HV	12Vdc	0.33 or 0.50A	
XY06015Z12EV	12Vdc	0.11 or 0.18A	XY07020Z12MV	12Vdc	0.30 or 0.40A	
XY06015Z12XV	12Vdc	0.12A	XY07020Z12LV	12Vdc	0.20 or 0.30A	
			XY07020Z12EV	12Vdc	0.14 or 0.20A	



Attachment to the Attestation No. E8N 09 08 25730 148



Taiwan

Based on the tests performed following models of the DC Fan "XY03, XY06, XY07, XY08 Series" are covered:

Model-#	DC Ratings		Model-#	DC Ratings	
			XY08020Z12UV	12Vdc	0.46 or 0.60A
			XY08020Z12HV	12Vdc	0.35 or 0.50A
XY07020Z24UV	24Vdc	0.56A	XY08020Z12MV	12Vdc	0.28 or 0.33 or 0.40A
XY07020Z24HV	24Vdc	0.45A			
XY07020Z24MV	24Vdc	0.39A	XY08020Z12LV	12Vdc	0.21 or 0.30A
XY07020Z24LV	24Vdc	0.35A	XY08020Z12EV	12Vdc	0.15 or 0.20A
XY07020Z24EV	24Vdc	0.32A	XY08020Z12XV	12Vdc	0.15
XY07025Z12SV	12Vdc	0.80A	XY08020Z24UV	24Vdc	0.48A
XY07025Z12UV	12Vdc	0.70A	XY08020Z24HV	24Vdc	0.39A
XY07025Z12HV	12Vdc	0.25 or 0.32A or 0.50 A	XY08020Z24MV	24Vdc	0.33A
			XY08020Z24LV	24Vdc	0.30A
XY07025Z12MV	12Vdc	0.20 or 0.25A or 0.40 A	XY08020Z24EV	24Vdc	0.27A
XY07025Z12LV	12Vdc	0.15 or 0.20A or 0.30 A			
			XY08020Z48UV	48Vdc	0.20A
XY07025Z12EV	12Vdc	0.20A	XY08020Z48HV	48Vdc	0.15A
			XY08020Z48MV	48Vdc	0.12A
XY07025Z24UV	24Vdc	0.40A	XY08020Z48LV	48Vdc	0.10A
XY07025Z24HV	24Vdc	0.30A	XY08020Z48EV	48Vdc	0.07A
XY07025Z24MV	24Vdc	0.20A			
XY07025Z24LV	24Vdc	0.10A	XY08025Z12SV	12Vdc	0.66 A or 0.70 A
			XY08025Z12UV	12Vdc	0.35 or 0.70 or 0.50 or 0.51A
XY07038Z12UV	12Vdc	0.63 or 0.90A	XY08025Z12HV	12Vdc	0.30 or 0.35A
XY07038Z12HV	12Vdc	0.59A	XY08025Z12MV	12Vdc	0.23 or 0.25A or 0.17A
XY07038Z12MV	12Vdc	0.56A			
XY07038Z12LV	12Vdc	0.47A	XY08025Z12LV	12Vdc	0.15A
XY07038Z12EV	12Vdc	0.38A	XY08025Z12EV	12Vdc	0.10A
XY07038Z12XV	12Vdc	0.33A			
			XY08025Z24SV	24Vdc	0.42 A
XY07520Z12UV	12Vdc	0.52A	XY08025Z24UV	24Vdc	0.40A or 0.26 A
XY07520Z12HV	12Vdc	0.45A	XY08025Z24HV	24Vdc	0.30A or 0.17 A
XY07520Z12MV	12Vdc	0.34A	XY08025Z24MV	24Vdc	0.20A or 0.09 A
XY07520Z12LV	12Vdc	0.27A	XY08025Z24LV	24Vdc	0.10A
XY07520Z12EV	12Vdc	0.20A			
			XY08025Z34UV	34Vdc	0.20A
XY07525Z12HV	12Vdc	0.30A	XY08025Z34HV	34Vdc	0.14A
XY07525Z12MV	12Vdc	0.22A	XY08025Z34MV	34Vdc	0.12A
XY07525Z12LV	12Vdc	0.15A			
			XY08025Z48SV	48Vdc	0.21A
XY07525Z24HV	24Vdc	0.20A	XY08025Z48UV	48Vdc	0.14A
XY07525Z24MV	24Vdc	0.15A	XY08025Z48HV	48Vdc	0.09A
XY07525Z24LV	24Vdc	0.10A	XY08025Z48MV	48Vdc	0.06A
XY07530Z12UV	12Vdc	0.55A	XY08038Z12SV	12Vdc	2.60 or 3.84A
XY07530Z12HV	12Vdc	0.42A	XY08038Z12UV	12Vdc	1.00 or 1.50 or 2.35 or 2.64A
XY07530Z12MV	12Vdc	0.25A			
XY07530Z12LV	12Vdc	0.15A	XY08038Z12HV	12Vdc	0.70 or 0.85 or 1.30 or 1.58 or or 1.71A
XY07530Z12EV	12Vdc	0.096A			
			XY08038Z12MV	12Vdc	0.60 or 1.02 or 1.12A
XY07530Z24UV	24Vdc	0.40A			
XY07530Z24HV	24Vdc	0.30A	XY08038Z12LV	12Vdc	0.40 or 0.70A
XY07530Z24MV	24Vdc	0.22A	XY08038Z12EV	12Vdc	0.46 or 0.51A
XY07530Z24LV	24Vdc	0.12A			
			XY08038Z24SV	24Vdc	1.80A
			XY08038Z24UV	24Vdc	1.35A or 1.17 A
XY08015Z05HV	5Vdc	0.50A	XY08038Z24HV	24Vdc	0.75A or 0.78 A
XY08015Z05MV	5Vdc	0.42A	XY08038Z24MV	24Vdc	0.56A or 0.55 A
XY08015Z05LV	5Vdc	0.30A	XY08038Z24LV	24Vdc	0.36A or 0.41 A
			XY08038Z24EV	24Vdc	0.28A or 0.25 A
XY08015Z12UV	12Vdc	0.60A			
XY08015Z12HV	12Vdc	0.50A	XY08038Z48SV	48Vdc	0.90A
XY08015Z12MV	12Vdc	0.48A	XY08038Z48UV	48Vdc	0.5A or 0.58 A
XY08015Z12LV	12Vdc	0.42A	XY08038Z48HV	48Vdc	0.42A or 0.51 A
XY08015Z12EV	12Vdc	0.30A	XY08038Z48MV	48Vdc	0.27A or 0.33 A
			XY08038Z48LV	48Vdc	0.18A or 0.23 A
			XY08038Z48EV	48Vdc	0.14A
XY08015Z24UV	24Vdc	0.48A			
XY08015Z24HV	24Vdc	0.45A			
XY08015Z24MV	24Vdc	0.43A	XY08080Z12UV	12Vdc	13.0A
XY08015Z24LV	24Vdc	0.38A			
XY08015Z24EV	24Vdc	0.33A	XY08825Z12UV	12Vdc	0.65A
			XY08825Z12HV	12Vdc	0.42A

Model Description:

D A 070 15 B 12 U -FAR  
A B C D E F G H

A - Fan Type

- D : Axial Fan
- 2 : Axial Fan Generation
- B : Blower
- C : Cross Fan

B - Internal Control Code

Y May be A-Z or 0-9

C - Frame Size

- 030 : 3.0cm
- 035 : 3.5cm
- 036 : 3.6cm
- 038 : 3.8cm
- 060 : 6.0cm
- 065 : 6.5cm
- 070 : 7.0cm
- 075 : 7.5cm
- 076 : 7.6cm
- 080 : 8.0cm
- 088 : 8.8cm

D - Frame Thickness

- 10 : 1.0cm
- 12 : 1.2cm
- 13 : 1.3cm
- 15 : 1.5cm
- 20 : 2.0cm
- 25 : 2.5cm
- 28 : 2.8cm
- 30 : 3.0cm
- 38 : 3.8cm
- 76 : 7.6cm
- 80 : 8.0cm

E - Bearing Type

- A : One Ball Bearing
- B : Two Ball Bearing
- C : Ceramic Bearing
- G : Air Bearing
- S : Sleeve Bearing
- T : One Ball and One Sleeve
- R : Hydraulic Bearing
- P : Power Life

F - Input Voltage

- 5 : 5Vdc
- 12 : 12Vdc
- 24 : 24Vdc
- 34 : 34Vdc
- 48 : 48Vdc

G - Speed of Fan

- G : Extremely High Speed
- F : Super High Speed
- S : Ultra High Speed
- U : Extra High Speed
- H : High Speed
- M : Medium Speed
- L : Low Speed
- E : Extra low speed
- X : Ultra low speed

H - Internal Control Code/ Control Type/ Signal Output

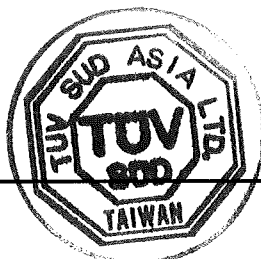
V = ABCD where A,B,C,D may be A-Z, 0-9 or "-"

Special note:

- When first code A denote for P, S, V or A
- P : PWM Controller
- S : Sensor Controller
- V : Voltage Controller
- A : PWM+ Sensor Controller
- When second code B denote for F or R
- F: FG (Frequency Generator or Tach Output)
- R: RD (Rotation Detector)

Remark: Marked "\*" are the additional items.

Date: 2011-07-13



Testing Laboratory

Joseph Lu



## GPWV2.E158191 Fans, Electric - Component

[Page Bottom](#)

### Fans, Electric - Component

[See General Information for Fans, Electric - Component](#)

#### ASIA VITAL COMPONENTS CO LTD

E158191

7TH FL-3  
24 WU-CHUAN 2ND RD  
HSIN CHUANG, TAIPEI HSIEN 242 TAIWAN

**AC fans**, Models AS8025-V1(X), AS8038-V1(Y), AS9225-V1(X), AS9238-V1(Y), AS12025-V1(Y), AS12038-V1(X), where X may be M or L, Y may be H, M or L.

Models AS8025-V2(X), AS8038-V2(Y), AS9225-V2(X), AS9238-V2(Y), AS12025-V2(Y), AS12038-V2(X), where X may be M or L, Y may be H, M or L.

Models AE17251-V1(X)B, AE17251-V1(Y), AS20572-V1H, AR25489-V1H, AR25489-V1M, where X may be M or L, Y may be H, M or L.

Models AE17251-V2(X)B, AE17251-V2(Y), AS20572-V2H, AR25489-V2H, AR25489-V2M, where X may be M or L, Y may be H, M or L.

Models AE17251-V1HB, -V2HB, AS12038-V1H, -V2H, AS8025-V1H, -V2H, AS9225-V1H, -V2H.

Models D7KA1238BAH5X(V), D7KA1238SAH5X(V), D7KA1238BBH5X(V), D7KA1238SBH5X(V), D6KA1751BAH5Y(V), D6KA1751BBH5Y(V) series, where (V) may be XX, each X may be A through Z or 0 through 9.

Models P1133HSLF, P2133HSLF, P2133HBL, P2133HBT.

Models P1259MBT, P1259MBL, P2259MBT, P2259MBL.

Models P1175HB(Y)-EF, P2175HB(Y)-EF, D3KA1738BAH5W(V), D3KA1738BBH5W(V), D6KA1738BAH5W(V), D6KA1738BBH5W(V), D3KA1751BAH5W(V), D3KA1751BBH5W(V), D6KA1751BAH5W(V), D6KA1751BBH5W(V) series, where (V) may be XX, each X may be A through Z or 0 through 9.

Model D3KA1755BBH5W(V) series, where (V) may be XX, each X may be A through Z or 0 through 9, except for T.

Models D7KA1889BBH5Y(V), D7KA1889BAH5Y(V), D7KA0825SAH7Z(V), B7KA1231BAHBX(V), B7KA1231SAHBX(V) series, where (V) may be XX, each X may be A through Z or 0 through 9.

Models D4KA1238BAH5W(V), D4KA1238SAH5W(V), D4KA1238BBH5W(V), D4KA1238SBH5W(V) series, where (V) may be XX, each X may be A through Z or 0 through 9.

Models D7KA1238BAH5W(V), D7KB1238BAH5W(V), D7KB1238BBH5W(V), D7KC1238BBH5W(V) series, where (V) may be XX, each X may be A through Z or 0 through 9.

Models B5AA1968BBH3W(V), D3KB1738BAH3W(V), D3KB1738BBH3W(V), D3KA1755BAH3W(V), D3KB1755BBH3W(V) Series, where (V) may be XX, each X may be A through Z or 0 through 9.

Models B5AA2271BBH3W(V) and D4KA2280BBH3W(V) Series, where (V) may be XX, each X may be A through Z or 0 through 9.

Models D5KA2380BBH3W(V) and D4KA2880BBH3W(V) Series, where (V) may be XX, each X may be A through Z or 0 through 9 or blank.

Models B2AA18M5BBH3W(V), B5AA2299BBH3W(V), and B5AA2589BBH3W(V) series, where (V) may be XX, each X may be A through Z or 0 through 9 or blank.

**DC fans**, Models AVCHSF4010, AVCHSF4510, AVCHSF5210, AVCHSF6010, AVCHSF8010, AVCHSF9010, HS4010-B.

Models B8025 Series, C5010 Series, E9025 Series, F9025 Series, F6015 Series.

Models (L)2510(Z)05M(Y), C2510(Z)12M(Y), C2510(Z)12L(Y), C3010(Z)05L(Y), (L)3010(Z)05M(Y), D3010(Z)05L(Y), (L)3010(Z)12M(Y), (L)3507(Z)05M(Y), C3507(Z)05L(Y), D3507(Z)05L(Y), C4007(Z)05C(Y), D4007(Z)05M(Y), (L)4007(Z)12H(Y), (L)4010(Z)05B(Y), (M)4010(Z)12X(Y), F4010(Z)12B(Y), (L)4010(Z)24B(Y), D4407(Z)12L(Y), (L)4407(Z)05C(Y), (L)4407(Z)12M(Y), (L)4510(Z)05B(Y), (M)4510(Z)12X(Y), F4510(Z)12B(Y), (M)5010(Z)05A(Y), (M)5010(Z)12X(Y), F5010(Z)12B(Y), F5011(Z)05A(Y), (M)6010(Z)12X(Y), F6010(Z)12E(Y), F6010(Z)24A(Y), B6015(Z)12X(Y), (L)6015(Z)12E(Y), E6015(Z)12H(Y), (M)6015(Z)24B(Y), F6015(Z)24A(Y), C6025(Z)12B(Y), C6025(Z)12E(Y), (O)6025(Z)12A(Y), E6025(Z)12H(Y), (O)6025(Z)24B(Y), C6025(Z)24B(Y), E6025(Z)24H(Y), C6025(Z)24B(Y), (P)6025(Z)48B(Y), (Q)8025(Z)12X(Y), C8025(Z)12B(Y), F8025(Z)12E(Y), E8025(Z)12H(Y), (L)8025(Z)24B(Y), B8025(Z)24A(Y), C8025(Z)48H(Y), D9025(Z)12B(Y), D9025(Z)12E(Y), B9025(Z)12X(Y), E9025(Z)12H(Y), (L)9025(Z)24B(Y), (N)9025(Z)24A(Y), (N)1225(Z)12A(Y), E1225(Z)12D(Y), B1225(Z)24B(Y), F1225(Z)24A(Y), B1225(Z)48B(Y), B1238(Z)12A(Y), B1238(Z)24B(Y), F1238(Z)24A(Y), E1238(Z)24D(Y), B1238(Z)



48(B)(Y), D2510(Z)12L(Y), where (A) may be H, M, L, or E, (B) may be H, M or L, (C) may be M or L, (D) may be U or H, (X) may be U, H, M, L, E or X, (L) may be C or D, (M) may be B, C or D, (N) may be B or F, (O) may be B, D or F, (P) may be B, C or F, (Q) may be B or D, (Z) may be A, B, C, S, T, R or P, (Y) may be XXXX, where X may be A through Z, 0 through 9, blank or "-".

Models C6015(A)12(X)(Y), D6015(Z)12(X)(Y), where (A) may be A, B, S, T, R or P, (X) may be H, M or L, (Y) may be XXXX, where X may be A through Z, 0 through 9, blank or "-".

Models B4020(Z)12H(Y), B4020(Z)12M(Y), B4020(Z)12L(Y), B5010(Z)12X(Y), B8025(Z)24U(Y), C4020(Z)24H(Y), where (Z) may be A, B, S, T, R or P, (Y) may be XXXX, where X may be A through Z, 0 through 9, blank or "-".

Models C5515(Z)12E(Y), C5515(Z)12H(Y), C5515(Z)12L(Y), C5515(Z)12M(Y), C9025(Z)12L(Y), C9025(Z)12M(Y), C9025(Z)12H(Y), C6015(Z)12E(Y), where (Z) may be A, B, S, T, R or P, (Y) may be XXXX, where X may be A through Z, 0 through 9, blank or "-".

Models D2510(Z)12H(Y), D5515(Z)12(X)(Y), where (Z) may be A, B, S, T, R or P, (X) may be H, M, L or E, (Y) may be XXXX, where X may be A through Z, 0 through 9, blank or "-".

Models E6015(Z)12H(Y), E8025(Z)12L(Y), E4020(Z)12H(Y), where (Z) may be A, B, S, T, R or P, (Y) may be XXXX, where X may be A through Z, 0 through 9, blank or "-".

Models F4020(Z)12(X)(Y), F6010(Z)12(A)(Y), F6015(Z)12(X)(Y), F8025(Z)12(B)(Y), F8025(Z)24U(Y), F9025(Z)12(B)(Y), F1225(Z)12U(Y), F1238(Z)12(C)(Y), F3510(Z)12(X)(Y), F4511(Z)05(X)(Y), F5013(Z)05(X)(Y), F6020(Z)12(X)(Y), F8017(Z)12(X)(Y), F1238(Z)12(D)(Y), F1238(Z)24(D)(Y), D(E)12038(Z)12(D)(V), D(E)12038(Z)24(D)(V), B3510(Z)12(X)(Y), where (Z) may be A, B, S, T, R or P, (X) may be H, M or L, (A) may be H, L or E, (B) may be H, M, L or E, (C) may be U, H, M, L or E, (D) may be F, S or U, (Y) and (V) may be XXXX, where X may be A through Z, 0 through 9, blank or "-", (E) may be A through Z, 0 through 9.

Models P4010(Z)12H(Y), P5010(Z)12H(Y), P5010(Z)12M(Y), P6010(Z)12H(Y), P6015(Z)12U(Y), P6025(Z)24U(Y), P8025(Z)24U(Y), P9025(Z)24U(Y), P1238(Z)24H(Y), P1225(Z)24H(Y), F4020(Z)24(A)(Y), C6010(Z)05(A)(Y), D6010(Z)05(A)(Y), B6020(Z)12(B)(Y), T6020(Z)12(B)(Y), F6025(Z)05(C)(Y), F6025(Z)12(D)(Y), C7015(Z)12(E)(Y), where (A) may be U, H, M or L, (B) may be H, M or L, (C) may be U, H, M, L or E, (D) may be S, U or H, (E) may be H, M, L or E, (Z) may be A, B, S, T, R or P, (Y) may be XXXX, where X may be A through Z, 0 through 9, blank or "-".

Models T4010(Z)12U(Y), T5010(Z)12U(Y), T5010(Z)12M(Y), T6010(Z)12H(Y), T6015(Z)12U(Y), T6015(Z)12H(Y), where (Z) may be A, B, S, T, R or P, (Y) may be XXXX, where X may be A through Z, 0 through 9, blank or "-".

Model (A)(B)(C)(Z)(E)(X)(Y), where (A) may be B, C, D, E, F or R, (B) may be 25, 30, 35, 40, 44, 50, 60, 80, 90 or 12, (C) may be 07, 10, 15, 17, 20, 25 or 38, (Z) may be A, B, S, T, R or P, (E) may be 05 or 12, (X) may be E, L, M, H or U, (Y) may be XXXX, where X may be A through Z, 0 through 9, blank or "-".

Models B6015(Z)07M(Y), F3820(Z)12(A)(Y), F7015(Z)12(X)(Y), C7015(Z)12(X)(Y), where (Z) may be A, B, S, T, R or P, (A) may be U, H, M or L, (X) may be U, H, M, L or E, (Y) may be XXXX, where X may be A through Z, 0 through 9, blank or "-".

Models F3828(Z)12(A)(Y), F4020(Z)12(F)(Y), F4028(Z)12(A)(Y), E5010(Z)12(A)(Y), F6010(Z)12U(Y), E6010(Z)12(A)(Y), F6015(Z)12U(Y), F6017(Z)12(B)(Y), F6038(Z)12(D)(Y), E7015(Z)12(B)(Y), E7025(Z)12H(Y), F7025(Z)12(E)(Y), F9733(Z)12(A)(Y), F6025(Z)24U(Y), F9025(Z)24U(Y), F8025(Z)48H(Y), where (Z) may be A, B, C, S, T, R or P, (A) may be H, M or L, (B) may be H or M, (C) may be U or H, (D) may be U, H, M or L, (E) may be H, M, L or E, (F) may be G, F, S or U, (Y) may be XXXX, where X may be A through Z, 0 through 9, blank or "-".

Models C7025(Z)12(X)(Y), D7025(Z)12(X)(Y), T7015(Z)12(A)(Y), F1238(Z)48(X)(Y), F8025(Z)12U(Y), F9025(Z)12U(Y), F9025(Z)24(A)(Y), C3010(Z)12H(Y), F1225(Z)48(X)(Y), C6010(Z)05M(Y), C8025(Z)24U(Y), C8025(Z)24U(Y), D8025(Z)24U(Y), B6015(Z)12U(Y), F8017(Z)12(B)(Y), F8025(Z)12(C)(Y), C9025(Z)24U(Y), where (Z) may be A, B, C, S, T, R or P, (X) may be U, H, M, L or E, (A) may be U, H, M or L, (B) may be S or U, (C) may be G, F or S, (Y) may be XXXX, where X may be A through Z, 0 through 9, "-" or blank.

Models D(Y)07015(Z)12(X)(V), DA07015B12E(V), D(Y)07020(Z)12(B)(V), B(Y)04015(Z)05(A)(V), B(Y)05015(Z)05(A)(V), D(Y)09020(Z)12(B)(V), D(Y)09032(Z)12(B)(V), D(Y)09238(Z)12(B)(V), D(Y)09238(Z)24(B)(V), D(Y)12025(Z)12(B)(V), DV09238(Z)12(C)(V), DV09238(Z)24(C)(V) series, where (Z) may be A, B, C, G, S, T, R or P, (Y) may be A through Z or 0 through 9, (X) may be U, H, M or L, (A) may be H, M or L, (B) may be U, H, M, L or E, (C) may be S, U or H, (V) may be XXXX, where X may be A through Z, 0 through 9, "-" or blank.

Models F7015T12MY-X, F7015S12MY-X, F7015B12MY-X, F7015T12HY-X, F7015S12HY-X, F7015B12HY-X, F7015T12UY-X, F7015S12UY-X, F7015B12UY-X.

Models B(Y)04015(Z)05(X)(V), B(Y)04510(Z)05(A)(V), B(Y)05115(Z)12(B)(V), D(Y)06015(Z)05(C)(V), D(Y)08020(Z)12(C)(V), D(Y)08025(Z)12(C)(V), D(Y)09220(Z)12(C)(V), D(Y)09225(Z)12(D)(V), where (Y) may be A through Z or 0 through 9, (Z) may be A, B, C, G, S, T, R or P, (C) may be U, H, M, L or E, (D) may be S, U, H, M, L or E, (X) may be S or U, (A) may be U, H, M, L, E or X, (B) may be U, H, M or L, (V) may be XXXX, where X may be A through Z, 0 through 9, "-" or blank.

Models D(Y)06010(Z)12(X)(V), D(Y)06015(Z)12(X)(V), D(Y)07520(Z)12(X)(V), where (Y) may be A through Z or 0 through 9, (Z) may be A, B, C, G, S, T, R or P, (X) may be U, H, M, L or E, (V) may be XXXX, where X may be A through Z, 0 through 9, "-" or blank.

Models B(Y)03510(Z)05(A)(V), B(Y)03510(Z)12(B)(V), D(Y)04010(Z)05(C)(V), D(Y)04010(Z)12(D)(V), D(Y)04028(Z)12S(V), D(Y)04028(Z)12(E)(V), D(Y)04048(Z)12(F)(V), B(Y)05515(Z)05(G)(V), B(Y)06015(Z)05(H)(V), B(Y)06015(Z)12(J)(V), D(Y)06025(Z)12(E)(V), D(Y)06038(Z)12(C)(V), D(Y)07025(Z)12H(V), B(Y)07530(Z)12(B)(V), B(Y)07530(Z)24(E)(V), D(Y)08025(Z)34(K)(V), D(Y)08038(Z)12(E)(V), B(Y)09733(Z)12H(V), DB08038(Z)12S(V), DB08038(Z)12U(V), DB08038(Z)12H(V), DB08038(Z)12M(V), DB08038(Z)12L(V) Series, where (Y) may be A through Z or 0 through 9, (Z) may be A, B, C, G, S, T, R or P, (A) may be H, M, L, E or X, (B) may be U, H, M, L or E, (C) may be S, U, H, M, L, E or X, (D) may be S, U, H, M, L or E, (E) may be U, H, M or L, (F) may be S, U or H, (G) may be H, M or L, (H) may be F, S, U, H, M, L, E or X, (J) may be G, F, S, U, H, M, L, E or X, (K) may be U, H or M, (V) may be XXXX, where X may be A through Z, 0 through 9, "-" or blank.

Models D(Y)04015(Z)12(A)(V), D(Y)08015(Z)12(B)(V), D(Y)08025(Z)12U(V), B(Y)10033(Z)12(C)(V), D(Y)12025(Z)12(B)(V), where (Y) may be A through Z or 0 through 9, (Z) may be A, B, C, G, S, T, R or P, (A) may be U, H, M, L, E or X, (B) may be U, H, M, L or E, (C) may be G, F, S, U, H, M or L, (V) may be XXXX, where X may be A through Z, 0 through 9, "-" or blank.

Models DA03510(Z)05(A)(V), D(Y)03510(Z)12(B)(V), D(Y)04510(Z)05(C)(V), D(Y)04510(Z)12(D)(V), B(Y)05015(Z)05(A)(V), B(Y)05015(Z)12(H)(V), D(Y)05015(Z)12(E)(V), B(Y)06025(Z)24(E)(V), D(Y)07025(Z)24(F)(V), D(Y)08025(Z)24(F)(V), D(Y)09025(Z)12(E)(V), D(Y)09238(Z)12(G)(V), D(Y)12025(Z)24(E)(V), D(Y)12025(Z)48(E)(V), where (Y) may be A through Z or 0 through 9, (Z) may be A, B, C, G, S, T, R or P, (A) may be F, S, U, H, M, L or E, (B) may be F, S, U, H or M, (C) may be H, M, L, E or X, (D) may be S, U, H, M, L, E or X, (E) may be U, H, M, L or E, (F) may

be U, H, M or L, (G) may be S, U, H, M or L, (H) may be S, U, H, M, L or E, (V) may be XXXX, where X may be A through Z, 0 through 9, "-" or blank.

Models D(Y)04056(Z)12(A)(V), B(Y)05125(Z)12(B)(V), B(Y)05512(Z)05(C)(V), B(Y)05512(Z)12(D)(V), D(Y)06020(Z)12(B)(V), D(Y)06025(Z)12(F)(V), D(Y)08038(Z)12(G)(V), B(Y)12032(Z)12(H)(V), D(Y)12038(Z)12(J)(V), D(K)12038(L)24(J)(V), DB12038B24H(W), D(Y)12038(Z)48(J)(V), where (Y) may be A through Z or 0 through 9, (Z) may be A, B, C, G, S, T, R or P, (A) may be U or H, (B) may be S, U, H, M, L or E, (C) may be G, F, S, U, H, M, L, E or X, (D) may be S, U, H, M, L, E or X, (E) may be H, M, L or E, (F) may be S, U, H, M, L, E or X, (G) may be S, U, H, M or L, (H) may be U, H, M, L or E, (J) may be H, M, L, E or X, (K) may be A thru Z or 0 thru 9, except for B; (L) may be A, C, G, S, T, R or P; (W)= XXXX where X may be A thru Z, 0 thru 9, "-" or blank, except for S009; (V) may be XXXX, where X may be A through Z, 0 through 9, "-" or blank

Models B(Y)04010(Z)05(A)(V), B(Y)04010(Z)12(B)(V), B(Y)04510(Z)05(G)(V), B(Y)04515(Z)12(C)(V), D(Y)05028(Z)12(C)(V), B(Y)05513(Z)05(D)(V), B(Y)05513(Z)12(E)(V), D(Y)06038(Z)12(F)(V), D(Y)06038(Z)24(F)(V), D(Y)07020(Z)24(C)(V), D(Y)07025(Z)12(G)(V), D(Y)07038(Z)12(H)(V), D(Y)08020(Z)24(C)(V), D(Y)08038(Z)12(C)(V), D(Y)08038(Z)24(C)(V), D(Y)08038(Z)48(C)(V), D(Y)09220(Z)24(C)(V), D(Y)09238(Z)12(H)(V), where (Y) may be A through Z or 0 through 9, (Z) may be A, B, C, G, S, T, R or P, (A) may be H, M or L, (B) may be H, M, L or E, (C) may be U, H, M, L or E, (D) may be G, F, S, U, H, M, L, E or X, (E) may be F, S, U, H, M, L, E or X, (F) may be S, U, H, M, L, E or X, (G) may be U, H, M, L or L, (H) may be U, H, M, L, E or X, (V) may be XXXX, where X may be A through Z, 0 through 9, "-" or blank.

Models D(Y)08038(Z)12HP(U), D(Y)09232(Z)12HP(V), where (Y) may be A through Z or 0 through 9, (Z) may be A, B, C, G, S, T, R or P, (U) may be  $X_1X_2X_3X_4$ , where  $X_2$  is 4 and  $X_1, X_3, X_4$  may be A through Z, 0 through 9, "-" or blank, (V) may be XXXX, where X may be A through Z, 0 through 9, "-" or blank.

Models D(Y)03828(Z)12(A)(V), D(Y)04210(Z)12(B)(V), D(Y)04410(Z)12(B)(V), B(Y)04709(Z)12(B)(V), D(Y)05010(Z)12(B)(V), D(Y)05510(Z)12(B)(V), D(Y)06510(Z)12(B)(V), where (Y) may be A through Z or 0 through 9, (Z) may be A, B, C, G, S, T, R or P, (A) may be U, H, M or L, (B) may be H, M or L, (V) may be XXXX, where X may be A through Z, 0 through 9, "-" or blank.

Models 0310-5(A)B, 0410-5(A)B, -12(A)B, 0420-24(A)B, 0510-12(A)B, 0615-5(A)B, 0815-12(A)B-B11, 0820-12(A)B, 0825-48(A)B, 0925-12LMB, -48(A)B-B7, 1225-48(A)B-B7, 1238-48(a)b-b7, 2510-5(A)B, 4507-12(A)B, 5215-12(A)B-B9, -12HHB-B9, -12(A)B-B11, -12(A)S-B11, -12HHB-B11, B0525-12(A)B, where (A) may be H, L or M.

Models 3510-12(A)B, 5215-12(C)S, 5215-5(C)B, 0615-12(A)B, 0620-12(A)B, 0625-12(A)B, 0625-48(A)B, 9232-12(A)B, 9232-48(A)B, 9232-12HBT(D), where (A) may be L, M or H, (C) may be L, M, H or HH, (D) may be blank, L or A.

Models DS4028-12(A)(B)(C)-(E), DS4028-12HHB(C)-A(E), DS4028-12(A)(B)(C)-A(E), DS4028-12HH(B)(C)-(E), DS8025-12(A)(B)(C)-(E), DB7530-12(A)(B)(C)-(E), DB9733-12(A)(B)(C)-(E), where (A) may be L, M or H, (B) may be B or S, (C) may be blank, A, AA, B, L, BA, T, TL or TA, (E) may be blank or 01 through 99.

Models DS8038-12HB(C)-(E), DS8038-12MB(C)-(E), DS8038-12LB(C)-(E), DS9232-12HS(C)-(E), DS9232-12MS(C)-(E), DS9232-12LS(C)-(E), DS9232-12HBT(D)-(E), DS9238-12HB(C)-(E), DS9238-12MB(C)-(E), DS9238-12LB(C)-(E), DS9238-12HBT(D)-(E), where (C) may be A, AA, blank, B or BA, (D) may be blank, L or A, (E) may be blank or 01 through 99.

Models DS8038-12HB(C)-(E), DS8038-12MB(C)-(E), DS8038-12LB(C)-(E), DS9232-12HS(C)-(E), DS9232-12MS(C)-(E), DS9232-12LS(C)-(E), DS9232-12HBT(D)-(E), DS9238-12HB(C)-(E), DS9238-12MB(C)-(E), DS9238-12LB(C)-(E), DS9238-12HBT(D)-(E), where (C) may be A, AA, blank, B or BA, (D) may be blank, L or A, (E) may be blank or 01 through 99.

Models DS3828-05(A)B(C)-(E), DS4028-05(A)B(C)-(E), DS3828-12(A)(B)(C)-(E), DS6025-12(A)(B)(C)-A-(E), DS6025-12(A)(B)(C)-B-(E), DS9225-12(A)(B)(C)-(E), DS12038-12(A)B(C)-(E), DS12038-12HBT(D)-(E), DS12738-12(A)B(C)-(E), DS12038-24(A)B(C)-(E), DS12738-24(A)B(C)-(E), DS12038-48(A)B(C)-(E), DS12738-48(A)B(C)-(E), where (A) may be H, M or L, (B) may be B or S, (C) may be A, AA, blank, B or BA, (D) may be blank, L or A, (E) may be blank or 01 through 99.

Models DS4020-05(A)B(C)-(E), DS4020-12(B)B(C)-(E), DS7015-12(A)B(C)-(E), DS8025-12HBT(D)-A-(E), DS8025-12(B)B(C)-A-(E), DS8025-12LLB(C)-A-(E), DS9225-12HBT(D)-B-(E), 0925-12HBT(D), DS9225-12(B)B(C)-B-(E), DS9232-12(A)B(C)-(E), DS9238-12HBT(D)-A-(E), DS9238-12HBT(D)-B-(E), DS9238-12HBT(D)-1, DS9238-12HBT(D)-1-B, DS7015-24(A)B(C)-(E), DS8025-24(B)B(C)-A-(E), DS8025-24LLB(C)-A-(E), DS9225-24(B)B(C)-B-(E), DS9232-24(A)B(C)-(E), DS8025-48(A)B(C)-A-(E), DS8025-48LLB(C)-A-(E), DS9225-48(A)B(C)-B-(E), DB7530-12HHB(C)-(E), where (A) may be H, M or L, (B) may be HH, H, M or L, (C) may be A, AA, blank, B or BA, (D) may be blank, L or A, (E) may be blank or 01 through 99.

Models DS6025-12MBT(D)-(E), DS6025-12MBT(D)-C(E), DS8025-12LLB(C)-B(E), DS12025-12HBT(D)-(E), DS12025-12(A)B(C)-(E), DS12038-12HBT(D)-B(E), DB9733-12HHBT(D)-(E), DB9733-12HHB(C)-(E), DR6025-12HB(C)-(E), where (A) may be HH, H, M or L, (C) may be A, AA, blank, B, L or BA, (D) may be blank, L or A, (E) may be blank or 01 through 99.

Models DS8038-12HHB(C)-A(E), DS12038-12HHBT(C)-A(E), DS12038-12HBT(C)-A(E), DS12038-12HHB(C)-A(E), DS12038-12(A)B(C)-A(E), DM8025-12HB(C)-(E), FT-DB00-08025-(F), where (A) may be H, M or L, (C) may be blank, A or L, (E) may be blank or 01 through 99, (F) may be blank or 001 through 999.

Models DS8025-12(A)S(C)-A(E), DS8025-12(B)S(C)-C(E), DS9225-12(B)S(C)-B(E), DS9225-12LS(C)-C(E), DS9225-12(B)S(C)-D(E), DS7015-12HHB(C)-(E), DS7025-12(B)B(C)-(E), where (A) may be H, M or L, (B) may be HH, H, M or L, (C) may be L, blank or A, (E) may be blank or 01 through 99.

Models DS6025-12(A)B(D)-(E), DS7015-12(B)(C)(D)-A(E), DS7015-12(B)(C)(D)-C(E), DS7020-12(B)(C)(D)-A(E), DS7020-12(B)(C)(D)-C(E), DS7020-12H(C)T(D)-D(E), DS7020-12M(C)T(D)-D(E), DS9225-12LLBT(D)-(E), DS9232-12HHBT(D)-(E), DM7224-12(B)B(D)-(E), DB7530-12(A)B(D)-A(E), where (A) may be HH, H, M or L, (B) may be H, M or L, (C) may be B, S or C, (D) may be L, blank or A, (E) may be blank or 01 through 99.

Models DS6010-12(B)S(D)-AY-(E), DS6015-12L(C)(D)-A-(E), DS6015-12H(C)(D)-C-(E), DS6015-12L(C)(D)-E-(E), DS12738-48VHB(D)-(E), DS12738-48(A)B(D)-A-(E), DB9733-12HHBT(D)-A-(E) series, where (A) may be HH, H, M or L, (B) may be H, M or L, (C) may be B, S or C, (D) may be L, blank or A, (E) may be blank or 01 through 99.

Models DS9238-12HBP(A)-(B), DS9238-12MBP(A)-(B) Series, where (A) may be blank or A through Z, (B) may be blank or 01 through 99.

Models 1238-12LB(A)-A-(B), DS8025-12HHBP(A)-(B), DS12038-12HBP(A)-(B), where (A) may be blank, A or L, (B) may be blank or 01 through 99; Models B(Y)13733(Z)12(C)(V) series, D(Y)13733(Z)12(C)(V) series, D(Y)09232(Z)12(C)(V) series, where (Y) may be A through Z or 0 through 9, (Z) may be A, B, C, G, S, T, R or P, (C) may be U, H, M, L or E, (V) may be XXXX, where X may be A through Z, 0 through 9, "-" or blank.

Model DB7525-12MBP(A)-(B), where (A) may be blank, A or L, (B) may be blank or 01 through 99.

Models DS8025-12(A)C(C)-B(D), DS9225-12(B)C(C)-B(D), DS9225-12HHC(C)-W(D), DS9225-12HHS(C)-W(D), DS9238-12HBT(C)-A-2, DS9238-12HBT(C)-C(D) Series, where (A) may be H, M or L, (B) may be HH, H, M or L, (C) may be blank, A or L, (D) may be blank or 01 through 99.

Model D(Y)12038(Z)12(A)(V) Series, where (Y) may be A through Z or 0 through 9, (Z) may be B, (A) may be H or L, (V) may be XXXX, where X may be A through Z, 0 through 9, "-" or blank

Models DS9225-12HBP(D)-(E), DS12025-12(B)C(D)-A(E), DS12025-12(B)F(D)-A(E), DS12738-12(A)B(D)-A(E), DS12738-24VHB(D)-A(E), DS12738-24(A)B(D)-A(E), DB9733-12VHBP(D)-(E), DB9733-12VHBP(D)-(E) Series, where (A) may be HH, H, M or L, (B) may be H, M or L, (D) may be blank, A or L, (E) may be blank or 01 through 99.

Models DS3828-12(A)B(D)-G(E), DS4010-12(A)B(D)-T(E), DS4010-05H(B)(D)-T(E), DS5010-12M(B)(D)-T(E), DS5010-12L(B)(D)-T(E), DS7020-12HB(D)-G(E), DS7020-12HC(D)-G(E) Series, where (A) may be H, M or L, (B) may be B, C or F, (D) may be blank, A or L, (E) may be blank or 01 through 99.

Models B(Y)12054(Z)48(T)(V), D(Y)12738(Z)48(U)(V) series, where (Y) may be A through Z or 0 through 9, (Z) may be A, B, C, G, S, T, R or P, (T) may be F, S, U or H, (U) may be F, S, U, H, M, L or E, (V) may be XXXX, where X may be A through Z, 0 through 9, "-" or blank.

Models D(Y)15050(Z)12H(V), D(Y)12032(Z)48(A)(V), BA07015(Z)12(B)-S01, D(Y)09225(Z)48(C)(V) series, where (A) may be U, H, M, L or E, (B) may be S, U, H, M or L, (C) may be F, S, U or H, (Y) may be A through Z or 0 through 9, (Z) may be A, B, C, G, S, T, R or P, (V) may be XXXX, where X may be A through Z, 0 through 9, "-" or blank.

Models DB0973312XZUN, DB0973312XZHN, DB0973324XZUN, DB0973324XZHN, DB0973324XZMN, DB0973324XZLN, DB1203212XZUN, DB1203212XZHN, DB1203212XZMN, DB1203212XZLN, DB1203224XZUN, DB1203224XZHN, DB1203224XZMN, DB1203224XZLN, DB1203248XZUN, DB1203248XZHN, DB1203248XZMN, DB1203248XZLN, DF0401005XZHN, DF0401005XZMN, DF0401005XZLN, DF0401012XZHN, DF0401012XZMN, DF0401012XZLN, DF0401505XZHN, DF0401505XZMN, DF0401505XZLN, DF0401512XZHN, DF0401512XZMN, DF0401512XZLN, DF0402012XZUN, DF0402012XZHN, DF0402012XZMN, DF0402012XZLN, DF0521512XZHN, DF0521512XZMN, DF0521512XZLN, DF0602012XZUN, DF0602012XZHN, DF0602012XZMN, DF0602012XZLN, DF0602024XZUN, DF0602024XZHN, DF0602024XZMN, DF0602024XZLN, DF0602048XZUN, DF0602048XZHN, DF0602048XZMN, DF0602048XZLN, DF0602512XZUN, DF0602512XZHN, DF0602512XZMN, DF0602512XZLN, DF0602524XZUN, DF0602524XZHN, DF0602524XZMN, DF0602524XZLN, DF0702505XZUN, DF0702505XZHN, DF0702505XZMN, DF0702505XZLN, DF0702512XZUN, DF0702512XZHN, DF0702512XZMN, DF0702512XZLN, DF0802505XZUN, DF0802505XZHN, DF0802505XZMN, DF0802505XZLN, DF0802512XZUN, DF0802512XZHN, DF0802512XZMN, DF0802512XZLN, DF0802524XZUN, DF0802524XZHN, DF0802524XZMN, DF0802524XZLN, DF0802548XZUN, DF0802548XZHN, DF0802548XZMN, DF0802548XZLN, DF0922505XZUN, DF0922505XZHN, DF0922505XZMN, DF0922505XZLN, DF0922524XZUN, DF0922524XZHN, DF0922524XZMN, DF0922524XZLN, DF0922548XZUN, DF0922548XZHN, DF0922548XZMN, DF0922548XZLN, DF1202505XZUN, DF1202505XZHN, DF1202505XZMN, DF1202505XZLN, DF1202512XZUN, DF1202512XZHN, DF1202512XZMN, DF1202512XZLN, DF1202524XZUN, DF1202524XZHN, DF1202524XZMN, DF1202524XZLN, DF1203812XZUN, DF1203812XZHN, DF1203812XZMN, DF1203812XZLN, DF1203824XZUN, DF1203824XZHN, DF1203824XZMN, DF1203824XZLN, DF1203848XZUN, DF1203848XZHN, DF1203848XZMN, DF1203848XZLN, DF1273812XZUN, DF1273812XZHN, DF1273812XZMN, DF1273812XZLN, DF1273824XZUN, DF1273824XZHN, DF1273824XZMN, DF1273824XZLN, DF1273848XZUN, DF1273848XZHN, DF1273848XZMN, DF1273848XZLN, DF1723812XZUN, DF1723812XZHN, DF1723812XZMN, DF1723812XZLN, DF1725112XZUN, DF1725112XZHN, DF1725112XZMN, DF1725112XZLN, DF0402812B2(B)N, DF0451012B1(C)N, DF0300612SE(A)N, DF0501012SE(C)N, DB0501512B2(H)N, DF0603812B2(C)N, DF0701512B2(D)N, DF0702512B2(E)N, DF0803812B2(A)N, DF0922512SE(B)N, DF0923212B2(C)N, DF1722548B2(F)N, DF0701512(A)(D)N, DF0601512(A)(C)N, DF0802524(A)(D)N, DF0922512B1A, DF0922512B1(B)(C)N, DF0922524(A)(D)N, where XZ may be SE, B1, B2 or HC, (A) may be U or L, (B) may be U, H, M or L, (C) may be U, M or L, where (D) may be U or M, (E) may be H or L, (F) may be U or H, (A) may be SE, B1 or B2, (B) may be B1 or B2, (C) may be L, M, H or U, (D) may be L, M or H.

Models DS04010(Z)12(W)(V), D(Y)04210(Z)12(Q)(V), B(Y)04812(Z)12(K)(V), DS05010(Z)12(Q)(V), BA06015(Z)05E(V), DS08015(Z)12(Q)(V), D(Y)09225(Z)12(C)(V), D(Y)09225(Z)24(C)(V), D(Y)12032(Z)12(Q)(V), D(Y)12032(Z)24(Q)(V), 2B12038(Z)12(G)(V), 2B12038(Z)24(P)(V), 2B12038(Z)48(P)(V), B(Y)13391(Z)12(U)(V), B(Y)13391(Z)24(N)(V), B(Y)13391(Z)48(N)(V), D(Y)15051(Z)24(Q)(V), DB17251(Z)24(Q)(V), B(Y)18080(Z)48(U)(V), B(Y)18080(Z)48(I)(V) series, where (Z) may be A, B, C, G, S, T, R or P, (W) may be S, U, H, M or L, (V) may be XXXX, where X may be A through Z, 0 through 9, "-" or blank, (Y) may be A through Z or 0 through 9, (Q) may be U, H, M, L or E, (K) may be H, M or L, (C) may be F, S, U or H, (G) may be U, H or M, (P) may be S, U, H or M, (N) may be S or U, (I) may be G, F or S.

Models B(Y)03010(Z)05(J)(V), D(Y)03628(Z)12S(V), DB03628B12F(V), DB03628B12(A)(V), D(Y)04020(Z)24(K)(V), D(Y)05020(Z)24(K)(V), DS06025(Z)12(Q)(V), DS06038(Z)12(Q)(V), DS07015(Z)12(W)(V), DV07020(Z)12(W)(V), D(Y)09238(Z)24(U)(V), DS12025(Z)24(W)(V), DL08025(Z)12(K)(V), DL09225(Z)12(C)(V), 2(Y)08038(Z)12(P)(V), DA09020(Z)12(W)(V), B(Y)06015(Z)12H(V), B(Y)07620(Z)12H(V), B(Y)08825(Z)12U(V), D(Y)12051(Z)12H(V), B(Y)17569(Z)24(M)(V), B(Y)17569(Z)48(C)(V) series, where (Y) may be A through Z or 0 through 9, (Z) may be A, B, C, G, S, T, R or P, (J) may be S, U, H or M, (K) may be S, U, H, M or L, (Q) may be S, U, H, M, L, E or X, (W) may be U, H, M, L or E, (C) may be U, H, M or L, (P) may be S, U, H, M, L or E, (M) may be H, M or L, (A) may be U or H, (V) may be XXXX, where X may be A through Z, 0 through 9, "-" or blank.

Models BATA1026(Z)2M(V) series, (Z) may be A, B, C, G, S, T, R or P, (V) may be XXXX, where X may be A through Z, 0 through 9, "-" or blank.

Models D(Y)04010(Z)12(M)(V), B(Y)TA0515(Z)2U(V), 2(Y)06038(Z)12(K)(V), 2B06038(Z)12L FAF, B8025(Z)12U(V), DT09238(Z)24H(V), DATA1238(Z)2(C)(V), DATA1238(Z)8(C)(V), DATA1525(Z)8(Q)(V) series, where (Y) may be A through Z or 0 through 9, (Z) may be A, B, C, G, S, T, R or P, (M) may be H, M or L, (K) may be H, M or L, (C) may be U, H, M or L, (Q) may be S, U, H, M, L, E or X, (V) may be XXXX, where X may be A through Z, 0 through 9, "-" or blank.

Models DA08020(Z)12U(V), DATA1238(Z)4(M)(V) series, where (M) may be U, H, M or L, (Z) may be A, B, C, G, S, T, R or P, (V) may be XXXX, where X may be A through Z, 0 through 9, "-" or blank.

Models DV04028(Z)12E(V), DA08025(Z)12(L)(V), DA08025(Z)24(L)(V), 2B08038(Z)24(J)(V), 2B08038(Z)48(J)(V), DB12738(Z)24(N)(V), DATA0625(Z)2(M)(V), DATA0625(Z)4(M)(V), DATA0625(Z)8(C)(V), DASA0832(Z)2(U)(V), DASA0832(Z)2(K)(V), DATA1225(Z)4(Q)(V), DATA1225(Z)8(Q)(V), DATA0625B4G(V) series, where (L) may be S, U, H or M, (J) may be S, U, H, M, L or E, (N) may be F, S, U, H, M, L or E, (K) may be H, M, L or E, (Q) may be G, F, S, U, H, M, L, E or X, (C) may be H, M, L, E or X, (M) may be F, S, U, H, M, L, E or X, (Z) may be A, B, C, G, S, T, R or P, (V) may be XXXX, where X may be A through Z, 0 through 9, "-" or blank.

Models P6025(Z)24U-248, P1238(Z)24H-088, DS07025(Z)12S(V), DS07025(Z)12(F)(V), DA09238(Z)24H(V), DS09238(Z)12(H)(V), DATA1551(Z)8(A)(V), DATA1551(Z)8M(W), DATA2070(Z)4(J)(V), DATA2070B8(E)(V), DYA2070B8(J)(V), DATA2070(Z)8(J)(V) series, where (Z) may be A, B, C, G, S, T, R or P, (E) may be G, F or E, (F) may be U, H, M, L or E, (H) may be U, H, M, L, E or X, (A) may be U, H, or L, (J) may be S, U, H, M, L or E, (V) may be XXXX, where X may be A through Z, 0 through 9, "-" or blank, (W) may be XXXX, where X may be A through Z, 0 through 9, "-" or blank except for P002.

Models DD04010(Z)05U(V), DD05010(Z)24U(V), DS05020(Z)05(G)(V), DS05020(Z)05(G)P(V), 2B06038(Z)48(B)(V), BATA0515(Z)2(C)(V), BAKA0815(Z)5H(V), DATA1225(Z)2(D)(V) series, where (A) may be U, H, M or L, (B) may be S, H, M or L, (C) may be U, H or M, (D) may be G, F,

S, U, H, M, L, E or X, (E) may be blank or P, (Z) may be A, B, C, G, S, T, R or P, (V) may be XXXX, where X may be A through Z, 0 through 9, "-" or blank.

Models BA03010(Z)12(A)(V), BN06015(Z)12H(V), 2B06038(Z)12G(V), 2B06038(Z)12U(V), 2B06038(Z)24(B)(V), DV06038(Z)48(C)(V), BA10033(Z)24(D)(V), DFTA0676(Z)2(E)(V), DS09225B12(F)(V), DSSC0715(Z)2(F)(V), DESC0715(Z)2(F)(V), DESC0715(Z)2(F)(V), DASA0832(Z)4(G)(V), DATA1551(Z)4(A)(V), BA10033B24G(V), BA10033B24F(V), BA10033B24S(V), BA10033B24U(V) series, where (Z) may be A, B, C, G, S, T, R, P, (A) may be U, H, M or L, (B) may be S, H, M or L, (C) may be S, U, H or M, (D) may be H, M or L, (E) may be S or U, (F) may be U, H, M, L or E, (G) may be M, L or E, (V) may be XXXX, where X may be A through Z, 0 through 9, "-" or blank.

Model DATA0725B8S(V) series, where (V) may be XXXX, where X may be A through Z, 0 through 9, "-" or blank.

Models DBTA0420B2(A)(V), DBTA0825B2(B)(V), DBTA0825B4(K)(V), DBTA0825B8(K)(V), DATA0838B8U(V), DCTA0938B8(B)(V), DATA1338B8(C)(V) series, where (A) may be U, H, M, L or E, (B) may be U, H or M, (C) may be F, S, U, H, M, L or E, (K) may be U, H or M, (V) may be XXXX, where X may be A through Z, 0 through 9, "-" or blank.

Models B6025B12S(V), T9025B24(A)(V), DB03828B12S(V), DA04015B24(B)(V), DK06025B12S(V), BA07015B05(C)(V), DS07025B12(D)(V), DS08025B24(E)(V), DF08080B12U(V), DS09225B12(F)(V), DS12025B12(F)(V), BATA0515B2U(V), DASA0925B2(G)(V), DESA0938B2(H)(V), DCTA0938B2(I)(V), DATB1238B2M(V), DATA1338B2(J)(V), DATA1338B4G(V), DATA1338B4(J)(V), DBTA1551B8(D)(V) series, where (V) may be XXXX, where X may be A through Z, 0 through 9, "-" or blank, (A) may be H, M or L, (B) may be U, H, M, L, E or X, (C) may be M, L, E or X, (D) may be S, U, H, M, L or E, (E) may be U, H, M or L, (F) may be U, H, M, L or E, (G) may be S, U, H, M or L, (H) may be H, M, L, E or X, (I) may be U, H or M, (J) may be F, S, U, H, M, L or E.

Models DBTA1225B8(Q)(V), DK03510B05(R)(V), DNSA0620B2(S)(V), DFTA0456B2(T)(V), where (Q) may be S, U, H, M, L, (R) may be U, H, M, L, (S) may be S, U, H, M, L, E, (T) may be U, H, M, (V) may be XXXX, where X may be A through Z, 0 through 9, "-" or blank.

Model BAKA9318B4H(V) series, where (V) may be XXXX, where X may be A through Z, 0 through 9, "-" or blank.

Model BATA1025B8S(V) series, where (V) may be XXXX, where X may be A through Z, 0 through 9, "-" or blank.

Models DATA0625B2G(V), DAKA0638B2(B)(V), DAKA0638B4(B)(V), DFTA0656B2(C)(V), BA07015B12(A)-S02, DBTA1225B2(A)(V), DBTA1225B4(A)(V) series, where (A) may be S, U, H, M or L, (B) may be U, H, M or L, (C) may be F, S or U, (V) may be XXXX, where X may be A through Z, 0 through 9, "-" or blank.

Models DASA0420R2(A)(V) series, where (A) may be U, H, M, or L, (V) may be XXXX, where X may be A through Z, 0 through 9, "-" or blank.

Models DA06010B05(A)(V), BA12032B24(B)(V), DAKA0310B3(C)(V), DAKA0420B2(D)(V), DAKA0510B3(E)(V), DAKB0625B2(F)(V), DAKB0625B4(G)(V), DASC0715R2(H)(V), DAKB0925B4(C)(V), DASD0925R2(B)(V), BASA1025B2(C)(V), DBTA1551B4(I)(V), DBTA1551B8(J)(V) series, where (A) may be M, L or E, (B) may be H, M or L, (C) may be U, H, M or L, (D) may be F, S, U, H, or M, (E) may be S, U, H, M or L, (F) may be F, S, U, H, M, L or E, (G) may be S, U, H or M, (H) may be U, H, M, L or E, (I) may be S, U, H, M, L or E, (J) may be G or F, (V) may be XXXX, where X may be A through Z, 0 through 9, "-" or blank.

Models DATA0832B2(A)(V), DATA0832B4(A)(V), DATA0832B8(A)(V) series, where (A) may be G, F, S, U, H, M or L, (V) may be XXXX, where X may be A through Z, 0 through 9, "-" or blank.

Models DA05015B05(A)(V), DASA0620B2(B)(V), DSSD0715R2(A)(V), DAKA0825B2(A)(V), DASA0825B2(C)(V), DATA0838B2(D)(V), DAKA0925B2(A)(V), DAKA0925B4(C)(V), DASB0925B2(A)(V), DATA1232B2(A)(V), DATA1232B4(A)(V), DATA1232B8(A)(V), DATC1238R2M(V), DBTB1238B2S(V), DBTB1238B2(E)(V), DBTB1238B4F(V), DBTB1238B4(F)(V), DBTB1238B8F(V), DBTB1238B8(F)(V), DATB1338B2(G)(V), DATB1338B4(G)(V), DATB1338B8(G)(V), DBTA1551B2(H)(V) series, where (A) may be U, H, M, L or E, (B) may be S, U, H, M, L or E, (C) may be U, H, M or L, (D) may be F, S, U or H, (E) may be U, H or M, (F) may be S, U, H or M, (G) may be F, S, U, H, M, L or E, (H) may be H, M, L or E, (V) may be XXXX, where X may be A through Z, 0 through 9, "-" or blank.

Model BNTA0613R2H(V) series, where (V) may be XXXX, where X may be A through Z, 0 through 9, "-" or blank.

Models DBTA0428B2(A)(V), BATB0515B2(B)(V), DASA0610B2(C)(V), BATA0812R5HP00(H), DASB0825B2(D)(V), DATA0838B4(E)(V), DATA0838B8(F)(V), DBTB0838B2S(V), DYTBO838B2G(V), DYTBO838B2S(V), DASC0925R2(C)(V), DASE0925R2(C)(V), DATA1525B2(G)(V), DATA1525B4(G)(V) series, where (A) may be S, U, H, M or L, (B) may be S, U, H or M, (C) may be U, H, M, L or E, (D) may be U, H, M or L, (E) may be S, U or H, (F) may be S or H, (G) may be S, U, H, M, L, E or X, (H) may be 1 or 2, (V) may be XXXX, where X may be A through Z, 0 through 9, "-" or blank.

Model BATA1015R5H(V) series, where (V) may be XXXX, where X may be A through Z, 0 through 9, "-" or blank.

Models BATA0817R2H(V), BASA0819R5U(V), BASA0819R5H(V), BASA0819R5M(V), BASA0819R5L(V) series, where (V) may be XXXX, each X may be A through Z, 0 through 9, "-" or blank.

Models BATA0715R5H(V), BNTA0815R5H(V) series, where (V) may be xxxx, where x may be A through Z, 0 through 9, "-" or blank.

Models BASA0510R5(X)(V), BASA0720B2(X)(V) series, where (X) may be U, H, M or L, (V) may be xxxx, where x may be A through Z, 0 through 9, "-" or blank.

Model BASA0710R2(X)(V) series, where (X) may be U, H, M or L, (V) may be xxxx, where x may be A through Z, 0 through 9, "-" or blank.

Models DATB0938B8(A)(V), DBTB1551B8G(V) series, where (A) may be U, H or M, (V) may be XXXX, where X may be A through Z, 0 through 9, "-" or blank.

Models BN13391B24F(V), BN22599B48(A)(V), DATA0625B8(B)(V), DATB0625B2(C)(V), DATB0625B4(C)(V), DATB0625B8(C)(V), BATA0832B2U(V), DBTA0838B2G(V), DBTA0838B4G(V), DYTBO925B2F(V), DCTA1238B2S(V), DYTBO925B2S(V) series, where (A) may be H or M, (B) may be G, F, S or U, (C) may be F, S, U, H, M, L or E, (V) may be XXXX, each X may be A through Z, 0 through 9, "-" or blank.

Models BASA0509R5(A)(V), DSSE0715R2(B)(V), BASA0725R2U(V), BASA0725R2(F)(V), DASC0825B2(A)(V), DASA0925R2(B)(V), DASB0925R2(C)(V), DESA0925R2(B)-001, DESA0925R2(C)-002, DESA0925R2(D)-003, DASA1225B2(D)(V), DASB1225B2(C)(V) series, where (A) may be U, H, M

or L, (B) may be U, H, M, L or E, (C) may be H, M, L or E, (D) may be M, L or E, (F) may be H, M or L, (V) may be XXXX, where X may be A through Z, 0 through 9, "-" or blank.

Models DAKA0410B2(a)(V), DAKA0428B2(b)(V), DAKB0428B2(a)(V), DAKA0625B2(a)(V), DAKA0625B4(a)(V), DAKA0825B4(c)(V), DAKA1238B2(a)(V), DAKA1238B4(d)(V), DAKA1238B8(d)(V) series, where (a) may be U, H, M, L or E, (b) may be U, H, M, L, E or X, (c) may be S, U, H, M, L or E, (d) may be H, M, L or E, (e) may be M, L or E, (V) may be XXXX, each X may be A through Z, 0 through 9, "-" or blank.

Model BNKA0310S5M(V) series, where (V) may be XXXX, where X may be A through Z, 0 through 9, "-" or blank.

Models DATA0825B8S(V), DATA0825B8U(V), DATA0825B8H(V), DATA0825B8M(V) series, where (V) may be XXXX, where X may be A through Z, 0 through 9, "-" or blank.

Models BAKA0615R2H(V), BAKB0615R2H(V), BAKA0722B2H(V), BAKA0822B2H(V), BAKA0825B2H(V), BAKA0922B2H(V) series, where (V) may be XXXX, where X may be A through Z, 0 through 9, "-" or blank.

Models BASA0406R5(A)(V), BASA0815R2(C)(V), BASA0817R2(C)(V), DATA0838B8E(V), BAKA0925B2H(V) series, where (A) may be U, H or M, (C) may be M, L or E, (V) may be XXXX, where X may be A through Z, 0 through 9, "-" or blank.

Models BATA0610R5H(V), DYTBO925B8F(V), DYTBO925B8S(V), DYTBO925B8H(V), DYTBO925B8M(V), DYTBO925B8U(V) Series, where (V) may be XXXX, where X may be A through Z, 0 through 9, "-" or blank.

Models DASD0720T2(C)(V), DS04010B24(A)(V), DS08020B48(B)(V), DASA0310R2(C)(V), DASA0510B2(B)(V), DASA0510R2(B)(V), BNTA0712R5H(V), BASA0815R5(D)(V), DASD0825B2(E)(V), BATA0912R5H(V), DAPA1525B8X(V), DAPB1751B8L(V) series, where (A) may be S or U, (B) may be U, H, M, L or E, (C) may be U, H, M or L, (D) may be M, L or E, (E) may be F, S, U, H or M, (V) may be XXXX, where X may be A through Z, 0 through 9, "-" or blank.

Models BASB0510R2(A)(V), DATA0307R5H(V) series, where (A) may be U, H or M, (V) may be XXXX, where X may be A through Z, 0 through 9, "-" or blank.

Models BNTA0610R5H(V), BATA0716R2H(V), BATA0822R2H(V) series, where (V) may be XXXX, where X may be A through Z, 0 through 9, "-" or blank.

Models DS08015R05(A)(V), DASA0815R2(B)(V), DASE0825T2(C)(V), DFTA0880B2U(V), DASA1238B2(D)(V), BNTA2589B8(E)(V), BASA5508R5(C)(V) series, where (A) may be H, M or L, (B) may be U, H, M, L or E, (C) may be U, H, M or L, (D) may be S, U, H, M, L or E, (E) may be H or M, (V) may be XXXX, where X may be A through Z, 0 through 9, "-" or blank.

Models BATA0607R5H(V), BASA0825R2(A)(V), BASB0825R2(A)(V) series, where (A) may be H, M, L or E, (V) may be XXXX, where X may be A through Z, 0 through 9, "-" or blank.

Models BAKA0825R2H(V), BAKA0922R2H(V) series, where (V) may be XXXX, where X may be A through Z, 0 through 9, "-" or blank.

Models DA05015B12S(V), BASA0615R2(A)(V), BASA0714R2(B)(V), BASB0615B2(F)(V), DATB0825B2(G)(V), BASA0819R2(E)(V) series, where (A) may be H, M, L or E, (B) may be U, H, M, L or E, (E) may be U, H, M or L, (F) may be M, or L, (G) may be S, U, H or M, (V) may be xxxx, where x may be A through Z, 0 through 9, "-", or blank.

Models BASA0712R5(A)(V), BASA0609R5(X)(V), BAKA0812R2U(V) series, where (A) may be H, M or L, (X) may be U, H, M or L, (V) may be XXXX, where X may be A through Z, 0 through 9, "-" or blank.

Model DYTBO638B8U(V) series, where (V) may be XXXX, where X may be A through Z, 0 through 9, "-" or blank.

Models DFTA0348B2S(V), DFTA0348B2U(V), DFTA0448B2(A)(V), DFTB0456B2U(V), DFTA0676B4(B)(V), BASB0712R5(C)(V), DASA0715R2(D)(V), BASB0817R2(E)(V) series, where (A) may be S, U, H or M, (B) may be S or U, (C) may be H, M or L, (D) may be U, H, M, L or E, (E) may be M, L or E, (V) may be XXXX, where X may be A through Z, 0 through 9, "-" or blank.

Models DFTA0880Y2U(V), DBTA0328B2(A)(V) series, where (A) may be S, U, H, M, L or E; (V) may be xxxx, where x may be A through Z, 0 through 9, "-" or blank.

Models DA04015B05(A)(V), DS04020B05(A)(V), DASA0410B5(A)(V), DASA0410B2(B)(V), DASA0410R2(A)(V), DASB0410R2(C)(V), DASB0510B2(D)(V), DASA0615R2(E)(V), DASA0820R2(F)(V), DATA0825B2(G)(V), DATA0825B4(G)(V), DASC0925B2(D)(V), BASA1120R2(H)(V) series, where (A) may be U, H, M or L, (B) may be S, U, H, M or L, (C) may be U, H or M, (D) may be H, M, L or E, (E) may be S, U, H, M, L or E, (F) may be U, H, M, L or E, (G) may be S, U, or H, (H) may be M, L or E, (V) may be XXXX, where X may be A through Z, 0 through 9, "-" or blank.

Models DASA0210R5(A)(V), BASA0712R2(B)(V), DBTB1225B8F(V) series, where (A) may be U, H, M or L, (B) may be H, M, L or E, (V) may be XXXX, where X may be A through Z, 0 through 9, "-" or blank.

Models BATA0507R5U(V), BATA0507R5H(V), BATA0812R5H(Y), DBTA0638B2(A)(V), DBTA0638B4(A)(V), DBTA0638B8(A)(V) series, where (A) may be S, U, H, M or L, (V) may be XXXX, where X may be A through Z, 0 through 9, "-" or blank, (Y) may be XXXX, where X may be A through Z, 0 through 9, "-" or blank, except for P001 and P002.

Models DATA0420B2(A)(V), DASB0815B2(B)(V), DV09238B48S(V), DBTB1225B2F(V) series, where (A) may be S, U, H, M or L, (B) may be U, H, M, L or E, (V) may be XXXX, where X may be A through Z, 0 through 9, "-" or blank.

Models DBTA0420B5(A)(V), DBTB0428B2(B)(V), DASB0815R2(C)(V), BATA1024B2H(V), BNTA1025B2U(V), DYTf1238B8H(V), DATC1551B8S(V) series, where (A) may be M, L, E or X, (B) may be S, U, H or M, (C) may be U, H, M, L or E, (V) may be XXXX, where X may be A through Z, 0 through 9, "-" or blank.

Models BATA0507R5M(V), DFTB0880B8(A)(V), DBTA1338B8H(V), BNTA1769Y8U(V) series, where (A) may be U, H, M, or L; and (V) may be XXXX, where X may be A through Z, 0 through 9, "-" or blank.

Models BASA0407R5(A)(V) series, where (A) may be S, U, or H; and (V) may be XXXX, where X may be A through Z, 0 through 9, "-" or blank.

Model BASB1125R2(A)(V) series, where (A) may be U, H or M; and (V) may be XXXX, where X may be A through Z, 0 through 9, "-" or blank.

Models DASF0925R2(A)(V), DASG0925R2(B)(V) series, where (A) may be H, M, L or E; (B) may be U, H or M; and (V) may be XXXX, where X may be A through Z, 0 through 9, "-" or blank.

Model BASA1225R2(A)(V) series, where (A) may be U, H, or M; and (V) may be XXXX, where X may be A through Z, 0 through 9, "-" or blank.

Models DA06010B24(A)(V), DV09238B48(B)(V), DATA0307R2S(V), DAKA0428R2(C)(V), DBTB0428B2F(V), DASA0510B5(A)(V), DBTC0638B2(C)(V), DASC0815B2(D)(V), DYTf1238B4(C)(V) series, where (A) may be U, H, M or L; (B) may be U or H; (C) may be S, U, H or M; (D) may be U, H, M, L or E; and (V) may be XXXX, where X may be A through Z, 0 through 9, "-" or blank.

Model DATA1551B8MP002 and Models DBTD1551B8U(V) series, where (V) may be XXXX, where X may be A through Z, 0 through 9, "-" or blank.

**Low voltage fans**, Models 1225-12, -24, 1238-12 followed by H, L or M, may be followed by H, L or M, followed by B or S, may be followed by A, B, C, T or X, may be followed by one suffix letter.

Models DBKA0456R2(A)(V), BASC0712R2(B)(V), BASB0715R2(C)(V), DASA0720B2(C)(V), BATA0810R5H(V), BASA0920R2(D)(V), BAKB0922R2H(V), DAKA0938R4(C)(V), BASB1025B2(E)(V), and BASA1125R2(D)(V) series, where (A) may be U, H, M, or L; (B) may be H, M, or L; (C) may be U, H, M, or L; (D) may be U, H, or M; (E) may be U, H, M, L, or E; and (V) may be XXXX, where X may be A through Z, 0 through 9, "-" or blank.

Models 0420-5(B)(C)(D), 0420-12(B)(C)(D), 0615-12(B)(C)(D), 0615-24(B)(C)(D), 0620-12(B)(B)(D), 0620-24(B)(B)(D), 0625-12(B)(B)(D), 0625-24(B)(B)(D), 0815-12(B)(C)(D), 0815-24(B)(C)(D), 0825-12(B)(C)(D), 0825-24(B)(C)(D), 0925-12(B)(C)(D)N7, 0925-12(B)(C)(D)B7, 0925-24(B)(C)(D)N7, 0925-24(B)(C)(D)B7, 1225-12(B)(B)(D)N7, 1225-12(B)(B)(D)B7, 1225-24(B)(B)(D)B7, 1225-24(B)(B)(D)N7, 1238-12(B)(B)(D)B3, 1238-12(B)(B)(D)B7, 1238-24(B)(B)(D)B3, 1238-24(B)(B)(D)B7, 5215-5(B)(B)(D), 5215-12(B)(B)(D), where (A) may be 5, 12 or 24, (B) may be H, L or M, (C) may be B or S, (D) may be A, AA, B, BA, T, TA, TL or X.

Model DS8038-12HBP(A)-(B) Series, where (A) may be blank, A or L, (B) may be blank or 01 through 99; Model D(Y)12038(Z)12(C)(V) series, where (Y) may be A through Z or 0 through 9, (Z) may be A, B, C, G, S, T, R or P, (C) may be U, H, M, L or E, (V) may be XXXX, where X may be A through Z, 0 through 9, "-" or blank.

Models B(Y)07525(Z)12(X)(V), B(Y)07525(Z)24(X)(V), D(Y)08015(Z)24(W)(V) series, where (Y) may be A through Z or 0 through 9, (Z) may be A, B, C, G, S, T, R or P, (X) may be H, M or L, (W) may be U, H, M, L or E, (V) may be XXXX, where X may be A through Z, 0 through 9, "-" or blank.

Models D(Y)06013(Z)12(Q)(V), B(Y)04506(Z)05(E)(V) Series, where (Q) may be U, H, M, L or E, (E) may be H, M or L, (Y) may be A through Z or 0 through 9, (Z) may be A, B, C, G, S, T, R or P, (V) may be XXXX, where X may be A through Z, 0 through 9, "-" or blank.

Models B(Y)04812(Z)05H(V), B(Y)06512(Z)05H(V), D(Y)06076(Z)12U(V), B(Y)12054(Z)24F(V), B(Y)12054(Z)24S(V), B(Y)12054(Z)24U(V), B(Y)12054(Z)24H(V) Series, where (Y) may be A through Z or 0 through 9, (Z) may be A, B, C, G, S, T, R or P, (V) may be XXXX, where X may be A through Z, 0 through 9, "-" or blank.

Models DD12038B12(E)(V), DS12038(Z)12(F)(V), D(Y)08020(Z)12(D)(V), D(Y)17251(Z)48(E)(V), DA17251B12H(V), DA17251B12M(V), DA17251B12L(V), DA17251B24(E)(V) Series and Model BN06015B12HP003, where (D) may be U, H, M, L, E or X, (E) may be U, H, M or L, (F) may be U, H, M, L or E, (Y) may be A through Z or 0 through 9, (Z) may be A, B, C, G, S, T, R or P, (V) may be XXXX, where X may be A through Z, 0 through 9, "-" or blank.

Models D(Y)12738(Z)12(A)(V), F7015(Z)12S(V), B(Y)04008(Z)05(B)(V), D(Y)09238(Z)24(B)(V), D(Y)09225T12(C)(V), D(Y)07038(Z)12(D)(V), 2(Y)12038(Z)48(E)(V), D(Y)04056(Z)12U(V) Series, where (A) may be F, S, U, H, M, L or E, (B) may be H, M or L, (C) may be U, H, M, L or E, (D) may be U, H, M, L, E or X, (E) may be U, H or M, (Y) may be A through Z or 0 through 9, (Z) may be A, B, C, G, S, T, R or P, (V) may be XXXX, where X may be A through Z, 0 through 9, "-" or blank.

Models DD12038(Z)48(A)(V) series, where (A) may be H, M, L or E, (Z) may be A, B, C, G, S, T, R or P, (V) may be XXXX, where X may be A through Z, 0 through 9, "-" or blank.

Models D(Y)05020(Z)12(A)(V), D(Y)04020(Z)12(A)(V), B(Y)06015(Z)05(B)(V), B(Y)06015(Z)12(B)(V), D(Y)06038(Z)24(C)(V), D(Y)08025(Z)12H(V), 2(Y)12038(Z)24(D)(V) Series, where (Y) may be A through Z or 0 through 9, (Z) may be A, B, C, G, S, T, R or P, (A) may be S, U, H, M or L, (B) may be H, M or L, (C) may be H, M, L, E or X, (D) may be U, H, M or L, (V) may be XXXX, where X may be A through Z, 0 through 9, "-" or blank.

Model B(Y)08825B12H(V) series where (Y) may be A through Z or 0 through 9, (V) may be XXXX, where X may be A through Z, 0 through 9, "-" or blank.

Models D(Y)04010(Z)12X(V), D(Y)04209(Z)12H(V), DD05010(Z)05U(V), DD05010(Z)12(R)(V), DN05010(Z)12X(V), DA07015(Z)12(Q)(V), DE07015(Z)12(Q)(V), DV04028(Z)24(Q)(V), BA07530(Z)24H(V), DB04028(Z)24(R)(V), 2(Y)09238(Z)12(W)(V), 2(Y)09238(Z)24(W)(V), 2(Y)09238(Z)48(W)(V), D(Y)15051(Z)48S(V), D(Y)15051(Z)48(Q)(V), DB17251(Z)48S(V), DB17251(Z)48(Q)(V), D(Y)14050(Z)24(R)(V), D(Y)14050(Z)48(R)(V), 2(Y)12038(Z)12(I)(V), D(Y)08025(Z)48(T)(V) series, where (Y) may be A through Z or 0 through 9, (Z) may be A, B, C, G, S, T, R or P, (W) may be S, U, H, M, L or E, (R) may be U, H, M or L, (Q) may be U, H, M, L or E, (I) may be U, H or M, (T) may be S, U, H or M, (V) may be XXXX, where X may be A through Z, 0 through 9, "-" or blank.

Model DB04028(Z)12U(V) series, where (Z) may be A, B, C, G, S, T, R or P, (V) may be XXXX, where X may be A through Z, 0 through 9, "-" or blank.

Models BASB0817R5M(V), BASB0817R5L(V), BASB0817R5E(V), BASB1120R2U(V), BASB1120R2H(V), BASB1120R2M(V) series, where (V) may be XXXX, where X may be A through Z, 0 through 9, "-" or blank.

Models DBTB0638B8H(V), BASB0815R2(X)(V), DATB1238B8(Y)(V) series, where (X) may be U, H or M; (Y) may be F, S or U; (V) may be XXXX, where X may be A through Z, 0 through 9, "-" or blank.

Models DS06025B24(Y)(V), and BASA1025R2(X)(V) series, where (X) may be U, H or M; (Y) may be U, H, M or L; (V) may be XXXX, where X may be A through Z, 0 through 9, "-" or blank.

Model DB12038B24HS009; and Models BA18080B24U(V), DAKA0825R4(A)(V), DYTB0838B2(B)(V), BAKA1232B2(B)(V), and BNTA32C0B8L(V) series, where (A) may be U, H, M, or L; (B) may be U, H, or M; (V) may be xxxx, where x may be A through Z, 0 through 9, "-", or blank.

Models DYTB0420B2(A)(V), and DBTB2070B8S(V) series, where (A) may be U, H, M, L or E; (V) may be xxxx, where x may be A through Z, 0 through 9, "-", or blank.

Marking: Company name or tradename "DATECH" and model designation.

Last Updated on 2011-09-26

[Questions?](#)

[Print this page](#)

[Notice of Disclaimer](#)

[Page Top](#)

Copyright © 2011 Underwriters Laboratories Inc.®

The appearance of a company's name or product in this database does not in itself assure that products so identified have been manufactured under UL's Follow-Up Service. Only those products bearing the UL Mark should be considered to be Listed and covered under UL's Follow-Up Service. Always look for the Mark on the product.

UL permits the reproduction of the material contained in the Online Certification Directory subject to the following conditions: 1. The Guide Information, Designs and/or Listings (files) must be presented in their entirety and in a non-misleading manner, without any manipulation of the data (or drawings). 2. The statement "Reprinted from the Online Certifications Directory with permission from Underwriters Laboratories Inc." must appear adjacent to the extracted material. In addition, the reprinted material must include a copyright notice in the following format: "Copyright © 2011 Underwriters Laboratories Inc.®"

An independent organization working for a safer world with integrity, precision and knowledge.





**GPWV8.E158191**  
**Fans, Electric Certified for Canada - Component**

[Page Bottom](#)

**Fans, Electric Certified for Canada - Component**

[See General Information for Fans, Electric Certified for Canada - Component](#)

**ASIA VITAL COMPONENTS CO LTD**

E158191

7TH FL-3  
24 WU-CHUAN 2ND RD  
HSIN CHUANG, TAIPEI HSIEN 242 TAIWAN

**AC fans**, Models AS8025-V1(X), AS8038-V1(Y), AS9225-V1(X), AS9238-V1(Y), AS12025-V1(Y), AS12038-V1(X), where (X) may be M or L, (Y) may be H, M or L.

Models AS8025-V2(X), AS8038-V2(Y), AS9225-V2(X), AS9238-V2(Y), AS12025-V2(Y), AS12038-V2(X), where (X) may be M or L, (Y) may be H, M or L.

Models AE17251-V1(X)B, AE17251-V1(Y), AS20572-V1H, AR25489-V1H, AR25489-V1M, where (X) may be M or L, (Y) may be H, M or L.

Models AE17251-V2(X)B, AE17251-V2(Y), AS20572-V2H, AR25489-V2H, AR25489-V2M, where (X) may be M or L, (Y) may be H, M or L.

Models AE17251-V1HB, -V2HB, AS12038-V1H, -V2H, AS8025-V1H, -V2H, AS9225-V1H, -V2H.

Models D6KA1751BAH5Y(V), D6KA1751BBH5Y(V) series, where (V) may be XX, each X may be A through Z or 0 through 9

Models P1133HSLF, P2133HSLF, P2133HBL, P2133HBT.

Models P1259MBT, P1259MBL, P2259MBT, P2259MBL.

Models P1175HB(Y)-EF, P2175HB(Y)-EF, D3KA1738BAH5W(V), D3KA1738BBH5W(V), D6KA1738BAH5W(V), D6KA1738BBH5W(V), D3KA1751BAH5W(V), D3KA1751BBH5W(V), D6KA1751BAH5W(V), D6KA1751BBH5W(V) series, where (V) may be XX, each X may be A through Z or 0 through 9

Model D3KA1755BBH5W(V) series, where (V) may be XX, each X may be A through Z or 0 through 9, except for T.

Models D7KA1889BBH5Y(V), D7KA1889BAH5Y(V), D7KA0825SAH7Z(V) series, where (V) may be XX, each X may be A through Z or 0 through 9.

Models D4KA1238BAH5W(V), D4KA1238SAH5W(V), D4KA1238BBH5W(V), D4KA1238SBH5W(V) series, where (V) may be XX, each X may be A through Z or 0 through 9.

Models D7KA1238BAH5W(V), D7KB1238BAH5W(V), D7KB1238BBH5W(V), D7KC1238BBH5W(V) series, where (V) may be XX, each X may be A through Z or 0 through 9.

Models B5AA1968BBH3W(V), D3KB1738BAH3W(V), D3KB1738BBH3W(V), D3KA1755BAH3W(V), D3KB1755BBH3W(V) Series, where (V) may be XX, each X may be A through Z or 0 through 9.

Models B5AA2271BBH3W(V) and D4KA2280BBH3W(V) Series, where (V) may be XX, each X may be A through Z or 0 through 9.

Models D5KA2380BBH3W(V) and D4KA2880BBH3W(V) Series, where (V) may be XX, each X may be A through Z or 0 through 9 or blank.

Models B2AA18M5BBH3W(V), B5AA2299BBH3W(V), and B5AA2589BBH3W(V) series, where (V) may be XX, each X may be A through Z or 0 through 9 or blank.

**DC fans**, Models AVCHSF4510, HS4010-B.

Models AVCHSF4010, AVCHSF4510, AVCHSF5210, AVCHSF6010, AVCHSF8010, AVCHSF9010.

Models CF41501, CF42401, CF42501, CF43401, CF43501, CF45401, CF46401, HS4010-B, HS5010-B1, -B2, -B3, -B4, Models B8025 Series, C5010 Series, E9025 Series, F6015 Series, F9025 Series.

Models (L)2510(Z)05M(Y), C2510(Z)12M(Y), C2510(Z)12L(Y), C3010(Z)05L(Y), (L)3010(Z)05M(Y), D3010(Z)05L(Y), (L)3010(Z)12M(Y), (L)3507(Z)05M(Y), C3507(Z)05L(Y), D3507(Z)05L(Y), C4007(Z)05(C)(Y), D4007(Z)05M(Y), (L)4007(Z)12H(Y), (L)4010(Z)05(B)(Y), (M)4010(Z)12(X)(Y), F4010(Z)12(B)(Y), (L)4010(Z)24(B)(Y), D4407(Z)12L(Y), (L)4407(Z)05(C)(Y), (L)4407(Z)12M(Y), (L)4510(Z)05(B)(Y), (M)4510(Z)12(X)(Y), F4510(Z)12(B)(Y), (M)5010(Z)05(A)(Y), (M)5010(Z)12(X)(Y), F5010(Z)12(B)(Y), F5011(Z)05(A)(Y), (M)6010(Z)12(X)(Y), F6010(Z)12E(Y), F6010(Z)24(A)(Y), B6015(Z)12(X)(Y), (L)6015(Z)12E(Y), E6015(Z)12H(Y), (M)6015(Z)24(B)(Y), F6015(Z)24(A)(Y), C6025(Z)12(B)(Y), , C6025(Z)12E(Y), (O)6025(Z)12(A)(Y), E6025(Z)12H(Y), (O)6025(Z)24(B)(Y), C6025(Z)24(B)(Y), C6025(Z)12E(Y), E6025(Z)24H(Y), (P)6025(Z)48(B)(Y), (Q)8025(Z)12(X)(Y), C8025(Z)12(B)(Y), F8025(Z)12E(Y), E8025(Z)12H(Y), (L)8025(Z)24(B)(Y), B8025(Z)24(A)(Y), C8025(Z)48H(Y), D9025(Z)12(B)



(Y), D9025(Z)12E(Y), B9025(Z)12(X)(Y), E9025(Z)12H(Y), (L)9025(Z)24(B)(Y), (N)9025(Z)24(A)(Y), (N)1225(Z)12(A)(Y), E1225(Z)12(D)(Y), B1225(Z)24(B)(Y), F1225(Z)24(A)(Y), B1225(Z)48(B)(Y), B1238(Z)12(A)(Y), B1238(Z)24(B)(Y), F1238(Z)24(A)(Y), E1238(Z)24(D)(Y), B1238(Z)48(B)(Y), D2510(Z)12L(Y), where (A) may be H, M, L or E, (B) may be H, M or L, (C) may be M or L, (D) may be U or H, (X) may be U, H, M, L, E or (L) may be C or D, (M) may be B, C or D, (N) may be B or F, (O) may be B, D or F, (P) may be B, C or F, (Q) may be B or D, (Z) may be A, B, C, S, T, R or P, (Y) may be XXXX, where X may be A through Z, 0 through 9, blank or "-".

Models B6015(Z)07M(Y), F3820(Z)12(A)(Y), F7015(Z)12(X)(Y), C7015(Z)12(X)(Y), where (Z) may be A, B, S, T, R or P, (A) may be U, H, M or L, (X) may be U, H, M, L or E, (Y) may be XXXX, where X may be A through Z, 0 through 9, blank or "-".

Models C6015(Z)12(X)(Y), D6015(Z)12(X)(Y), where (Z) may be A, B, S, T, R or P, (X) may be H, M or L, (Y) may be XXXX, where X may be A through Z, 0 through 9, blank or "-".

Models B4020(Z)12H(Y), B4020(Z)12M(Y), B4020(Z)12L(Y), B5010(Z)12X(Y), B8025(Z)24U(Y), C4020(Z)24H(Y), where (Z) may be A, B, S, T, R or P, (Y) may be XXXX, where X may be A through Z, 0 through 9, blank or "-".

Models C5515(Z)12E(Y), C5515(Z)12H(Y), C5515(Z)12L(Y), C5515(Z)12M(Y), C9025(Z)12L(Y), C9025(Z)12M(Y), C9025(Z)12H(Y), C6015(Z)12E(Y) where (Z) may be A, B, S, T, R or P, (Y) may be XXXX, where X may be A through Z, 0 through 9, blank or "-".

Models D5515(Z)12(X)(Y), D2510(Z)12H(Y), where (Z) may be A, B, S, T, R or P, (X) may be H, M, L or E, (Y) may be XXXX, where X may be A through Z, 0 through 9, blank or "-".

Models E6015(Z)12H(Y), E8025(Z)12L(Y), E4020(Z)12H(Y), E6015(Z)12H(Y), where (Z) may be A, B, S, T, R or P, (Y) may be XXXX, where X may be A through Z, 0 through 9, blank or "-".

Models F4020(Z)12(X)(Y), F6010(Z)12(A)(Y), F6015(Z)12(X)(Y), F8025(Z)12(A)(Y), F8025(Z)24U(Y), F9025(Z)12(A)(Y), F1225(Z)12U(Y), F1238(Z)12(B)(Y), F3510(Z)12(X)(Y), F4511(Z)05(X)(Y), F5013(Z)05(X)(Y), F6020(Z)12(X)(Y), F8017(Z)12(X)(Y), F1238(Z)12(D)(Y), F1238(Z)24(D)(Y), D(E)12038(Z)12(D)(V), D(E)12038(Z)24(D)(V), B3510(Z)12(X)(Y), where (Z) may be A, B, S, T, R or P, (A) may be H, M, L or E, (B) may be U, H, M, L or E, (X) may be H, M or L, (D) may be F, S or U, (Y) and (V) may be XXXX, where X may be A through Z, 0 through 9, blank or "-", (E) may be A through Z, 0 through 9.

Models P4010(Z)12H(Y), P5010(Z)12H(Y), P5010(Z)12M(Y), P6010(Z)12H(Y), P6015(Z)12U(Y), P6025(Z)24U(Y), P8025(Z)24U(Y), P9025(Z)24U(Y), P1238(Z)24H(Y), P1225(Z)24H(Y), F4020(Z)24(A)(Y), C6010(Z)05(A)(Y), D6010(Z)05(A)(Y), B6020(Z)12(B)(Y), T6020(Z)12(B)(Y), F6025(Z)05(C)(Y), F6025(Z)12(D)(Y), C7015(Z)12(E)(Y), where (Z) may be A, B, C, S, T, R or P, (A) may be U, H, M or L, (B) may be H, M or L, (C) may be U, H, M, L or E, (D) may be S, U or H, (E) may be H, M, L or E, (Y) may be XXXX, where X may be A through Z, 0 through 9, "-" or blank.

Models T4010(Z)12U(Y), T5010(Z)12U(Y), T5010(Z)12M(Y), T6010(Z)12H(Y), T6015(Z)12U(Y), T6015(Z)12H(Y), where (Z) may be A, B, S, T, R or P, (Y) may be XXXX, where X may be A through Z, 0 through 9, blank or "-".

Models B6010(Z)12E(Y), B8025(Z)12E(Y), C2510(Z)05H(Y), C2510(Z)05L(Y), C3010(Z)12(X)(Y), C3507(Z)05H(Y), C4007(Z)12L(Y), C4007(Z)12M(Y), C4020(Z)12(X)(Y), C4407(Z)12L(Y), C6010(Z)12H(Y), C6010(Z)12U(Y), C6017(Z)12(X)(Y), C6020(Z)12L(Y), C6020(Z)12M(Y), D2510(Z)05H(Y), D2510(Z)05L(Y), D2510(Z)12M(Y), D3010(Z)12H(Y), D3010(Z)12L(Y), D4007(Z)05L(Y), D4007(Z)12L(Y), D4007(Z)12M(Y), D4020(Z)12(X)(Y), D5010(Z)12E(Y), D6010(Z)12U(Y), D6017(Z)12(X)(Y), D6020(Z)12L(Y), D6020(Z)12M(Y), D8025(Z)12(X)(Y), E1225(Z)12L(Y), E1238(Z)12H(Y), E1238(Z)12L(Y), E6010(Z)12H(Y), E6015(Z)12L(Y), E6015(Z)12M(Y), E6017(Z)12H(Y), E8025(Z)12H(Y), E8025(Z)12M(Y), E9025(Z)12H(Y), E9025(Z)12L(Y), F6010(Z)12M(Y), F6015(Z)12E(Y), R1225(Z)12H(Y), R1225(Z)12U(Y), R1238(Z)12H(Y), R6015(Z)12H(Y), R8025(Z)12H(Y), R9025(Z)12H(Y) series, where (Z) may be A, B, C, S, T, R or P, (X) may be H, M or L, (Y) may be XXXX, where X may be A through Z, 0 through 9, blank or "-".

Models F3828(Z)12(A)(Y), F4020(Z)12(F)(Y), F4028(Z)12(A)(Y), E5010(Z)12(A)(Y), F6010(Z)12U(Y), E6010(Z)12(A)(Y), F6015(Z)12U(Y), F6017(Z)12(B)(Y), F6038(Z)12(D)(Y), E7015(Z)12(B)(Y), E7025(Z)12H(Y), F7025(Z)12(E)(Y), F9733(Z)12(A)(Y), F6025(Z)24U(Y), F9025(Z)24U(Y), F8025(Z)48H(Y), where (Z) may be A, B, C, S, T, R or P, (A) may be H, M or L, (B) may be H or M, (C) may be U or H, (D) may be U, H, M or L, (E) may be H, M, L or E, (F) may be G, F, S or U, (Y) may be XXXX, where X may be A through Z, 0 through 9, blank or "-".

Models C7025(Z)12(X)(Y), D7025(Z)12(X)(Y), T7015(Z)12(A)(Y), F1238(Z)48(X)(Y), F8025(Z)12U(Y), F9025(Z)12U(Y), F9025(Z)24(A)(Y), C3010(Z)12H(Y), F1225(Z)48(X)(Y), C6010(Z)05M(Y), C8025(Z)24U(Y), D8025(Z)24U(Y), B6015(Z)12U(Y), F8017(Z)12(B)(Y), F8025(Z)12(C)(Y), C9025(Z)24U(Y), where (Z) may be A, B, C, S, T, R or P, (X) may be U, H, M, L or E, (A) may be U, H, M or L, (B) may be U or H, (C) may be G, F or S, (Y) may be XXXX, where X may be A through Z, 0 through 9, "-" or blank.

Models D(Y)07015(Z)12(X)(V), DA07015B12E(V), D(Y)07020(Z)12(B)(V), B(Y)04015(Z)05(A)(V), B(Y)05015(Z)05(A)(V), D(Y)09020(Z)12(B)(V), D(Y)09032(Z)12(B)(V), D(Y)09238(Z)12(B)(V), D(Y)09238(Z)24(B)(V), D(Y)12025(Z)12(B)(V), DV09238(Z)12(C)(V), DV09238(Z)24(C)(V) series, where (Z) may be A, B, C, S, T, R or P, (Y) may be A through Z or 0 through 9, (X) may be U, H, M or L, (A) may be H, M or L, (B) may be U, H, M, L or E, (C) may be S, U or H, (V) may be XXXX, where X may be A through Z, 0 through 9, "-" or blank.

Models F7015T12MY-X, F7015S12MY-X, F7015B12MY-X, F7015T12HY-X, F7015S12HY-X, F7015B12HY-X, F7015T12UY-X, F7015S12UY-X, F7015B12UY-X.

Models B(Y)04015(Z)05(X)(V), B(Y)04510(Z)05(A)(V), B(Y)05115(Z)12(B)(V), D(Y)06015(Z)05(C)(V), D(Y)08020(Z)12(C)(V), D(Y)08025(Z)12(C)(V), D(Y)09220(Z)12(C)(V), D(Y)09225(Z)12(D)(V), where (Y) may be A through Z or 0 through 9, (Z) may be A, B, C, G, S, T, R or P, (C) may be U, H, M, L or E, (X) may be S or U, (A) may be U, H, M, L, E or X, (B) may be U, H, M or L, (D) may be S, U, H, M, L or E, (V) may be XXXX, where X may be A through Z, 0 through 9, "-" or blank.

Models D(Y)06010(Z)12(X)(V), D(Y)06015(Z)12(X)(V), D(Y)07520(Z)12(X)(V), where (Y) may be A through Z or 0 through 9, (Z) may be A, B, C, G, S, T, R or P, (X) may be U, H, M, L or E, (V) may be XXXX, where X may be A through Z, 0 through 9, "-" or blank.

Models B(Y)03510(Z)05(A)(V), B(Y)03510(Z)12(B)(V), D(Y)04010(Z)05(C)(V), D(Y)04010(Z)12(D)(V), D(Y)04028(Z)12S(V), D(Y)04028(Z)12(E)(V), D(Y)04048(Z)12(F)(V), B(Y)05515(Z)05(G)(V), B(Y)06015(Z)05(H)(V), B(Y)06015(Z)12(J)(V), D(Y)06025(Z)12(E)(V), D(Y)06038(Z)12(C)(V), D(Y)07025(Z)12H(V), B(Y)07530(Z)12(B)(V), B(Y)07530(Z)24(E)(V), D(Y)08025(Z)34(K)(V), D(Y)08038(Z)12(E)(V), B(Y)09733(Z)12H(V), DB08038(Z)12S(V), DB08038(Z)12U(V), DB08038(Z)12H(V), DB08038(Z)12M(V), DB08038(Z)12L(V) Series, where (Y) may be A through Z or 0 through 9, (Z) may be A, B, C, G, S, T, R or P, (A) may be H, M, L, E or X, (B) may be U, H, M, L or E, (C) may be S, U, H, M, L, E or X, (D) may be S, U, H, M, L or E, (E) may be U, H, M or L, (F) may be S, U or H, (G) may be H, M or L, (H) may be F, S, U, H, M, L, E or X, (J) may be G, F, S, U, H, M, L, E or X, (K) may be U, H or M, (V) may be XXXX, where X may be A through Z, 0 through 9, "-" or blank.

Models D(Y)04015(Z)12(A)(V), D(Y)08015(Z)12(B)(V), D(Y)08025(Z)12U(V), B(Y)10033(Z)12(C)(V), D(Y)12025(Z)12(B)(V), where (Y) may be A

through Z or 0 through 9, (Z) may be A, B, C, G, S, T, R or P, (A) may be U, H, M, L, E or X, (B) may be U, H, M, L or E, (C) may be G, F, S, U, H, M or L, (V) may be XXXX, where X may be A through Z, 0 through 9, "-" or blank.

Models DA03510(Z)05(A)(V), , D(Y)03510(Z)12(B)(V), D(Y)04510(Z)05(C)(V), D(Y)04510(Z)12(D)(V), B(Y)05015(Z)05(A)(V), B(Y)05015(Z)12(H)(V), D(Y)05015(Z)12(E)(V), B(Y)06025(Z)24(E)(V), D(Y)07025(Z)24(F)(V), D(Y)08025(Z)24(F)(V), D(Y)09025(Z)12(E)(V), D(Y)09238(Z)12(G)(V), D(Y)12025(Z)24(E)(V), D(Y)12025(Z)48(E)(V), where (Y) may be A through Z or 0 through 9, (Z) may be A, B, C, G, S, T, R or P, (A) may be F, S, U, H, M, L or E, (B) may be F, S, U, H or M, (C) may be H, M, L, E or X, (D) may be S, U, H, M, L, E or X, (E) may be U, H, M, L or E, (F) may be U, H, M or L, (G) may be S, U, H, M or L, (H) may be S, U, H, M, L or E, (V) may be XXXX, where X may be A through Z, 0 through 9, "-" or blank.

Models D(Y)04056(Z)12(A)(V), B(Y)05125(Z)12(B)(V), B(Y)05512(Z)05(C)(V), B(Y)05512(Z)12(D)(V), D(Y)06020(Z)12(B)(V), D(Y)06025(Z)12(F)(V), D(Y)08038(Z)12(G)(V), B(Y)12032(Z)12(H)(V), D(Y)12038(Z)12(J)(V), D(K)12038(L)24(J)(V), DB12038B24H(W), D(Y)12038(Z)48(J)(V), where (Y) may be A through Z or 0 through 9, (Z) may be A, B, C, G, S, T, R or P, (A) may be U or H, (B) may be S, U, H, M, L or E, (C) may be G, F, S, U, H, M, L, E or X, (D) may be S, U, H, M, L, E or X, (E) may be H, M, L or E, (F) may be S, U, H, M, L, E or X, (G) may be S, U, H, M or L, (H) may be U, H, M, L or E, (J) may be H, M, L, E or X, (K) may be A thru Z or 0 thru 9, except for B; (L) may be A, C, G, S, T, R or P; (W)= XXXX where X may be A thru Z, 0 thru 9, "-" or blank, except for S009; (V) may be XXXX, where X may be A through Z, 0 through 9, "-" or blank.

Models B(Y)04010(Z)05(A)(V), B(Y)04010(Z)12(B)(V), B(Y)04510(Z)05(G)(V), B(Y)04515(Z)12(C)(V), D(Y)05028(Z)12(C)(V), B(Y)05513(Z)05(D)(V), B(Y)05513(Z)12(E)(V), D(Y)06038(Z)12(F)(V), D(Y)06038(Z)24(F)(V), D(Y)07020(Z)24(C)(V), D(Y)07025(Z)12(G)(V), D(Y)07038(Z)12(H)(V), D(Y)08020(Z)24(C)(V), D(Y)08038(Z)12(C)(V), D(Y)08038(Z)24(C)(V), D(Y)08038(Z)48(C)(V), D(Y)09220(Z)24(C)(V), D(Y)09238(Z)12(H)(V), where (Y) may be A through Z or 0 through 9, (Z) may be A, B, C, G, S, T, R or P, (A) may be H, M or L, (B) may be H, M, L or E, (C) may be U, H, M, L or E, (D) may be G, F, S, U, H, M, L, E or X, (E) may be F, S, U, H, M, L, E or X, (F) may be S, U, H, M, L, E or X, (G) may be U, H, M, L or L, (H) may be U, H, M, L, E or X, (V) may be XXXX, where X may be A through Z, 0 through 9, "-" or blank.

Models D(Y)08038(Z)12HP(U), D(Y)09232(Z)12HP(V), where (Y) may be A through Z or 0 through 9, (Z) may be A, B, C, G, S, T, R or P, (U) may be X<sub>1</sub>X<sub>2</sub>X<sub>3</sub>X<sub>4</sub>, where X<sub>2</sub> is 4 and X<sub>1</sub>, X<sub>3</sub>, X<sub>4</sub> may be A through Z, 0 through 9, "-" or blank, (V) may be XXXX, where X may be A through Z, 0 through 9, "-" or blank.

Models D(Y)03828(Z)12(A)(V), D(Y)04210(Z)12(B)(V), D(Y)04410(Z)12(B)(V), B(Y)04709(Z)12(B)(V), D(Y)05010(Z)12(B)(V), D(Y)05510(Z)12(B)(V), D(Y)06510(Z)12(B)(V), where (Y) may be A through Z or 0 through 9, (Z) may be A, B, C, G, S, T, R or P, (A) may be U, H, M or L, (B) may be H, M or L, (V) may be XXXX, where X may be A through Z, 0 through 9, "-" or blank.

Models 0310-5(A)B, 0410-5(A)B, 0410-12(A)B, 0420-24(A)B, 0510-12(A)B, 0615-5(A)B, 0815-12(A)B-B11, 0820-12(A)B, 0825-48(A)B, 0925-12LMB, 0925-48(A)B-B7, 1225-48(A)B-B7, 1238-48(A)B-B7, 2510-5(A)B, 4507-12(A)B, 5215-12(A)B-B9, 5215-12HMB-B9, 5215-12(A)B-B11, 5215-12(A)S-B11, 5215-12HMB-B11, B0525-12(A)B, where (A) may be H, L or M.

Models 3510-12(A)B, 5215-12(C)S, 5215-5(C)B, 0615-12(A)B, 0620-12(A)B, 0625-12(A)B, 0625-48(A)B, 9232-12(A)B, 9232-12HBT(D), 9232-48(A)B, where (A) may be L, M or H, (C) may be L, M, H or HH, (D) may be blank, L or A.

Models DS4028-12(A)(B)(C)-(E), DS4028-12HMB(C)-A(E), DS4028-12(A)(B)(C)-A(E), DS4028-12HH(B)(C)-(E), DS8025-12(A)(B)(C)-(E), DB7530-12(A)(B)(C)-(E), DB9733-12(A)(B)(C)-(E), where (A) may be L, M or H, (B) may be B or S, (C) may be blank, A, AA, B, L, BA, T, TL or TA, (E) may be blank or 01 through 99.

Models DS8038-12HB(C)-(E), DS8038-12MB(C)-(E), DS8038-12LB(C)-(E), DS9232-12HS(C)-(E), DS9232-12MS(C)-(E), DS9232-12LS(C)-(E), DS9232-12HBT(D)-(E), DS9238-12HB(C)-(E), DS9238-12MB(C)-(E), DS9238-12LB(C)-(E), DS9238-12HBT(D)-(E), where (C) may be A, AA, blank, B or BA, (D) may be blank, L or A, (E) may be blank or 01 through 99.

Models DS8038-12HB(C)-(E), DS8038-12MB(C)-(E), DS8038-12LB(C)-(E), DS9232-12HS(C)-(E), DS9232-12MS(C)-(E), DS9232-12LS(C)-(E), DS9232-12HBT(D)-(E), DS9238-12HB(C)-(E), DS9238-12MB(C)-(E), DS9238-12LB(C)-(E), DS9238-12HBT(D)-(E), where (C) may be A, AA, blank, B or BA, (D) may be blank, L or A, (E) may be blank or 01 through 99.

Models DS3828-05(A)(B)(C)-(E), DS4028-05(A)(B)(C)-(E), DS3828-12(A)(B)(C)-(E), DS6025-12(A)(B)(C)-A(E), DS6025-12(A)(B)(C)-B(E), DS9225-12(A)(B)(C)-(E), DS12038-12(A)(B)(C)-(E), DS12038-12HBT(D)-(E), DS12738-12(A)(B)(C)-(E), DS12038-24(A)(B)(C)-(E), DS12738-24(A)(B)(C)-(E), DS12038-48(A)(B)(C)-(E), DS12738-48(A)(B)(C)-(E), where (A) may be H, M or L, (B) may be B or S, (C) may be A, AA, blank, B or BA, (D) may be blank, L or A, (E) may be blank or 01 through 99.

Models DS4020-05(A)(B)(C)-(E), DS4020-12(B)(B)(C)-(E), DS7015-12(A)(B)(C)-(E), DS8025-12HBT(D)-A(E), DS8025-12(B)(B)(C)-A(E), DS8025-12LLB(C)-A(E), DS9225-12HBT(D)-B(E), 0925-12HBT(D), DS9225-12(B)(B)(C)-B(E), DS9232-12(A)(B)(C)-(E), DS9238-12HBT(D)-A(E), DS9238-12HBT(D)-B(E), DS9238-12HBT(D)-1, DS9238-12HBT(D)-1-B, DS7015-24(A)(B)(C)-(E), DS8025-24(B)(B)(C)-A(E), DS8025-24LLB(C)-A(E), DS9225-24(B)(B)(C)-B(E), DS9232-24(A)(B)(C)-(E), DS8025-48(A)(B)(C)-A(E), DS8025-48LLB(C)-A(E), DS9225-48(A)(B)(C)-B(E), DB7530-12HMB(C)-(E), where (A) may be H, M or L, (B) may be HH, H, M or L, (C) may be A, AA, blank, B or BA, (D) may be blank, L or A, (E) may be blank or 01 through 99.

Models DS6025-12MBT(D)-(E), DS6025-12MBT(D)-C(E), DS8025-12LLB(C)-B(E), DS12025-12HBT(D)-(E), DS12025-12(A)(B)(C)-(E), DS12038-12HBT(D)-B(E), DB9733-12HMBT(D)-(E), DB9733-12HMB(C)-(E), DR6025-12HB(C)-(E) where (A) may be HH, H, M or L, (C) may be A, AA, blank, B, L or BA, (D) may be blank, L or A, (E) may be blank or 01 through 99.

Models DS8038-12HMB(C)-A(E), DS12038-12HMBT(C)-A(E), DS12038-12HBT(C)-A(E), DS12038-12HMB(C)-A(E), DS12038-12(A)(B)(C)-A(E), DM8025-12HB(C)-(E), FT-DB00-08025-(F), where (A) may be H, M or L, (C) may be blank, A or L, (E) may be blank or 01 through 99, (F) may be blank or 001 through 999.

Models DS8025-12(A)S(C)-A(E), DS8025-12(B)S(C)-C(E), DS9225-12(B)S(C)-B(E), DS9225-12LS(C)-C(E), DS9225-12(B)S(C)-D(E), DS7015-12HMB(C)-(E), DS7025-12(B)(B)(C)-(E), where (A) may be H, M or L, (B) may be HH, H, M or L, (C) may be L, blank or A, (E) may be blank or 01 through 99.

Models DS6025-12(A)(B)(D)-(E), DS7015-12(C)(D)(D)-A(E), DS7015-12(B)(C)(D)-C(E), DS7020-12(B)(C)(D)-A(E), DS7020-12(B)(C)(D)-C(E), DS7020-12H(C)T(D)-D(E), DS7020-12M(C)T(D)-D(E), DS9225-12LLBT(D)-(E), DS9232-12HMBT(D)-(E), DM7224-12(B)(B)(D)-(E), DB7530-12(A)(B)(D)-A(E), where (A) may be HH, H, M or L, (B) may be H, M or L, (C) may be B, S or C, (D) may be L, blank or A, (E) may be blank or 01 through 99.

Models DS6010-12(B)S(D)-AY-(E), DS6015-12L(C)(D)-A(E), DS6015-12H(C)(D)-C(E), DS6015-12L(C)(D)-E-(E), DS12738-48VHB(D)-(E), DS12738-48(A)(B)(D)-A-(E), DB9733-12HMBT(D)-A-(E) series, where (A) may be HH, H, M or L, (B) may be H, M or L, (C) may be B, S or C, (D) may be L, blank or A, (E) may be blank or 01 through 99.

Models DS9238-12HBP(A)-(B), DS9238-12MBP(A)-(B) Series, where (A) may be blank or A through Z, (B) may be blank or 01 through 99.

Models 1238-12LB(A)-A-(B), DS8025-12HHBP(A)-(B), DS12038-12HBP(A)-(B), where (A) may be blank, A or L, (B) may be blank or 01 through 99; Models B(Y)13733(Z)12(C)(V) series, D(Y)13733(Z)12(C)(V) series, D(Y)09232(Z)12(C)(V) series, where (Y) may be A through Z or 0 through 9, (Z) may be A, B, C, G, S, T, R or P, (C) may be U, H, M, L or E, (V) may be XXXX, where X may be A through Z, 0 through 9, "-" or blank.

Model DB7525-12MBP(A)-(B), where (A) may be blank, A or L, (B) may be blank or 01 through 99.

Models DS8025-12(A)C(C)-B(D), DS9225-12(B)C(C)-B(D), DS9225-12HHC(C)-W(D), DS9225-12HHS(C)-W(D), DS9238-12HBT(C)-A-2, DS9238-12HBT(C)-C(D) Series, where (A) may be H, M or L, (B) may be HH, H, M or L, (C) may be blank, A or L, (D) may be blank or 01 through 99.

Model D(Y)12038(Z)12(A)(V) Series, where (Y) may be A through Z or 0 through 9, (Z) may be B, (A) may be H or L, (V) may be XXXX, where X may be A through Z, 0 through 9, "-" or blank.

Models DS9225-12HBP(D)-(E), DS12025-12(B)C(D)-A(E), DS12025-12(B)F(D)-A(E), DS12738-12(A)B(D)-A(E), DS12738-24VHB(D)-A(E), DS12738-24(A)B(D)-A(E), DB9733-12VHBP(D)-(E), DB9733-12VHB(D)-(E) Series, where (A) may be HH, H, M or L, (B) may be H, M or L, (D) may be blank, A or L, (E) may be blank or 01 through 99.

Models DS3828-12(A)B(D)-G(E), DS4010-12(A)B(D)-T(E), DS4010-05H(B)(D)-T(E), DS5010-12M(B)(D)-T(E), DS5010-12L(B)(D)-T(E), DS7020-12HB(D)-G(E), DS7020-12HC(D)-G(E) Series, where (A) may be H, M or L, (B) may be B, C or F, (D) may be blank, A or L, (E) may be blank or 01 through 99.

Models B(Y)12054(Z)48(T)(V), D(Y)12738(Z)48(U)(V) series, where (Y) may be A through Z or 0 through 9, (Z) may be A, B, C, G, S, T, R or P, (T) may be F, S, U or H, (U) may be F, S, U, H, M, L or E, (V) may be XXXX, where X may be A through Z, 0 through 9, "-" or blank.

Models D(Y)15050(Z)12H(V), D(Y)12032(Z)48(A)(V), BA07015(Z)12(B)-S01, D(Y)09225(Z)48(C)(V) series, where (A) may be U, H, M, L or E, (B) may be S, U, H, M or L, (C) may be F, S, U or H, (Y) may be A through Z or 0 through 9, (Z) may be A, B, C, G, S, T, R or P, (V) may be XXXX, where X may be A through Z, 0 through 9, "-" or blank.

Models DB0973312XZUN, DB0973312XZHN, DB0973324XZUN, DB0973324XZMN, DB0973324XZLN, DB0973324XZHN, DB0973324XZMN, DB0973324XZLN, DB1203212XZUN, DB1203212XZHN, DB1203212XZMN, DB1203212XZLN, DB1203224XZUN, DB1203224XZHN, DB1203224XZMN, DB1203224XZLN, DB1203248XZUN, DB1203248XZHN, DB1203248XZMN, DB1203248XZLN, DF0401005XZHN, DF0401005XZMN, DF0401005XZLN, DF0401012XZHN, DF0401012XZMN, DF0401012XZLN, DF0401505XZHN, DF0401505XZMN, DF0401505XZLN, DF0401512XZHN, DF0401512XZMN, DF0401512XZLN, DF0402012XZUN, DF0402012XZHN, DF0402012XZMN, DF0402012XZLN, DF0602024XZUN, DF0602024XZHN, DF0602024XZMN, DF0602024XZLN, DF0602048XZUN, DF0602048XZHN, DF0602048XZMN, DF0602048XZLN, DF0602512XZUN, DF0602512XZHN, DF0602512XZMN, DF0602512XZLN, DF0602524XZUN, DF0602524XZHN, DF0602524XZMN, DF0602524XZLN, DF0702505XZUN, DF0702505XZHN, DF0702505XZMN, DF0702505XZLN, DF0702512XZUN, DF0702512XZHN, DF0702512XZMN, DF0702512XZLN, DF0802505XZUN, DF0802505XZHN, DF0802505XZMN, DF0802505XZLN, DF0802512XZUN, DF0802512XZHN, DF0802512XZMN, DF0802512XZLN, DF0802524XZUN, DF0802524XZHN, DF0802524XZMN, DF0802524XZLN, DF0802548XZUN, DF0802548XZHN, DF0802548XZMN, DF0802548XZLN, DF0922505XZUN, DF0922505XZHN, DF0922505XZMN, DF0922505XZLN, DF0922524XZUN, DF0922524XZHN, DF0922524XZMN, DF0922524XZLN, DF0922548XZUN, DF0922548XZHN, DF0922548XZMN, DF0922548XZLN, DF1202505XZUN, DF1202505XZHN, DF1202505XZMN, DF1202505XZLN, DF1202512XZUN, DF1202512XZHN, DF1202512XZMN, DF1202512XZLN, DF1202524XZUN, DF1202524XZHN, DF1202524XZMN, DF1202524XZLN, DF1203812XZUN, DF1203812XZHN, DF1203812XZMN, DF1203812XZLN, DF1203824XZUN, DF1203824XZHN, DF1203824XZMN, DF1203824XZLN, DF1273812XZUN, DF1273812XZHN, DF1273812XZMN, DF1273812XZLN, DF1273824XZUN, DF1273824XZHN, DF1273824XZMN, DF1273824XZLN, DF1273848XZUN, DF1273848XZHN, DF1273848XZMN, DF1273848XZLN, DF1723812XZUN, DF1723812XZHN, DF1723812XZMN, DF1723812XZLN, DF1725112XZUN, DF1725112XZHN, DF1725112XZMN, DF1725112XZLN, DF0402812B2(B)N, DF0451012B1(C)N, DF0300612SE(A)N, DF0501012SE(C)N, DB0501512B2HN, DF0603812B2(C)N, DF0701512B2(D)N, DF0702512B2(E)N, DF0803812B2(A)N, DF0922512SE(B)N, DF0923212B2(C)N, DF1722548B2(F)N, DF0701512(A)(D)N, DF0601512(A)(C)N, DF0802524(A)(D)N, DF0922512B1A, DF0922512B1(B)(C)N, DF0922524(A)(D)N, where XZ may be SE, B1, B2 or HC, (A) may be U or L, (B) may be U, H, M or L, (C) may be U, M or L, (D) may be U or M, (E) may be H or L, (F) may be U or H, (A) may be SE, B1 or B2, (B) may be B1 or B2, (C) may be L, M, H or U, (D) may be L, M or H.

Models DS04010(Z)12(W)(V), D(Y)04210(Z)12(Q)(V), B(Y)04812(Z)12(K)(V), DS05010(Z)12(Q)(V), BA06015(Z)05E(V), DS08015(Z)12(Q)(V), D(Y)09225(Z)12(C)(V), D(Y)09225(Z)24(C)(V), D(Y)12032(Z)12(Q)(V), D(Y)12032(Z)24(Q)(V), 2B12038(Z)12(G)(V), 2B12038(Z)24(P)(V), 2B12038(Z)48(P)(V), B(Y)13391(Z)12(U)(V), B(Y)13391(Z)24(N)(V), B(Y)13391(Z)48(N)(V), D(Y)15051(Z)24(Q)(V), DB17251(Z)24(Q)(V), B(Y)18080(Z)48(U)(V), B(Y)18080(Z)48(I)(V) series, where (Z) may be A, B, C, G, S, T, R or P, (W) may be S, U, H, M or L, (V) may be XXXX, where X may be A through Z, 0 through 9, "-" or blank, (Y) may be A through Z or 0 through 9, (Q) may be U, H, M, L or E, (K) may be H, M or L, (C) may be F, S, U or H, (G) may be U, H or M, (P) may be S, U, H or M, (N) may be S or U, (I) may be G, F or S.

Models B(Y)03010(Z)05(J)(V), D(Y)03628(Z)12S(V), DB03628B12F(V), DB03628B12(A)(V), D(Y)04020(Z)24(K)(V), D(Y)05020(Z)24(K)(V), DS06025(Z)12(Q)(V), DS06038(Z)12(Q)(V), DS07015(Z)12(W)(V), DV07020(Z)12(W)(V), D(Y)09238(Z)24U(V), DS12025(Z)24(W)(V), DL08025(Z)12(K)(V), DL09225(Z)12(C)(V), 2(Y)08038(Z)12(P)(V), DA09020(Z)12(W)(V), B(Y)06015(Z)12H(V), B(Y)07620(Z)12H(V), B(Y)08825(Z)12U(V), D(Y)12051(Z)12H(V), B(Y)17569(Z)24(M)(V), B(Y)17569(Z)48(C)(V) series, where (Y) may be A through Z or 0 through 9, (Z) may be A, B, C, G, S, T, R or P, (J) may be S, U, H or M, (K) may be S, U, H, M, L or L, (Q) may be S, U, H, M, L, E or X, (W) may be U, H, M, L or E, (C) may be U, H, M or L, (P) may be S, U, H, M, L or E, (M) may be H, M or L, (A) may be U or H, (V) may be XXXX, where X may be A through Z, 0 through 9, "-" or blank.

Models BATA1026(Z)2M(V) series, (Z) may be A, B, C, G, S, T, R or P, (V) may be XXXX, where X may be A through Z, 0 through 9, "-" or blank.

Models D(Y)04010(Z)12(M)(V), B(Y)TA0515(Z)2U(V), 2(Y)06038(Z)12(K)(V), 2B06038(Z)12L FAF, B8025(Z)12U(V), DT09238(Z)24H(V), DATA1238(Z)2(C)(V), DATA1238(Z)8(C)(V), DATA1525(Z)8(Q)(V) series, where (Y) may be A through Z or 0 through 9, (Z) may be A, B, C, G, S, T, R or P, (M) may be H, M or L, (K) may be S, H, M or L, (C) may be U, H, M or L, (Q) may be S, U, H, M, L, E or X, (V) may be XXXX, where X may be A through Z, 0 through 9, "-" or blank.

Models DA08020(Z)12U(V), DATA1238(Z)4(M)(V) series, where (M) may be U, H, M or L, (Z) may be A, B, C, G, S, T, R or P, (V) may be XXXX, where X may be A through Z, 0 through 9, "-" or blank.

Models DV04028(Z)12E(V), DA08025(Z)12(L)(V), DA08025(Z)24(L)(V), 2B08038(Z)24(J)(V), 2B08038(Z)48(J)(V), DB12738(Z)24(N)(V), DATA0625(Z)2(M)(V), DATA0625(Z)4(M)(V), DATA0625(Z)8(C)(V), DASA0832(Z)2U(V), DASA0832(Z)2(K)(V), DATA1225(Z)4(Q)(V), DATA1225(Z)8(Q)(V), DATA0625B4G(V) series, where (L) may be S, U, H or M, (J) may be S, U, H, M, L or E, (N) may be F, S, U, H, M, L or E, (K) may be H, M, L or E, (Q) may be G, F, S, U, H, M, L, E or X, (C) may be H, M, L, E or X, (M) may be F, S, U, H, M, L, E or X, (Z) may be A, B, C, G, S, T, R or P, (V) may be XXXX, where X may be A through Z, 0 through 9, "-" or blank.

Models P6025(Z)24U-248, P1238(Z)24H-088, DS07025(Z)12S(V), DS07025(Z)12(F)(V), DA09238(Z)24H(V), DS09238(Z)12(H)(V), DATA1551(Z)

8(A)(V), DATA1551(Z)8M(W), DATA2070(Z)4(J)(V), DATA2070B8(E)(V), DYTA2070B8(J)(V), DATA2070(Z)8(J)(V) series, where (Z) may be A, B, C, G, S, T, R or P, (E) may be G, F or E, (F) may be U, H, M, L or E, (H) may be U, H, M, L, E or X, (A) may be U, H, or L, (J) may be S, U, H, M, L or E, (V) may be XXXX, where X may be A through Z, 0 through 9, "-" or blank, (W) may be XXXX, where X may be A through Z, 0 through 9, "-" or blank except for P002.

Models DD04010(Z)05U(V), DD05010(Z)24U(V), DS05020(Z)05(G)(V), DS05020(Z)05(G)P(V), 2B06038(Z)48(B)(V), , BATA0515(Z)2(C)(V), BAKA0815(Z)5H(V), DATA1225(Z)2(D)(V) series, where (A) may be U, H, M or L, (B) may be S, H, M or L, (C) may be U, H or M, (D) may be G, F, S, U, H, M, L, E or X, (E) may be blank or P, (Z) may be A, B, C, G, S, T, R or P, (V) may be XXXX, where X may be A through Z, 0 through 9, "-" or blank.

Models BA03010(Z)12(A)(V), BN06015(Z)12H(V), 2B06038(Z)12G(V), 2B06038(Z)12U(V), 2B06038(Z)24(B)(V), DV06038(Z)48(C)(V), BA10033(Z)24(D)(V), DFTA0676(Z)2(E)(V), DSSC0715(Z)2(F)(V), DSSC0715(Z)2(F)A(V), DESC0715(Z)2(F)(V), DESC0715(Z)2(F)A(V), DASA0832(Z)4(G)(V), DATA1551(Z)4(A)(V), BA10033B24G(V), BA10033B24F(V), BA10033B24S(V), BA10033B24U(V) series, (Z) may be A, B, C, G, S, T, R, P, (A) may be U, H, M or L, (B) may be S, H, M or L, (C) may be S, U, H or M, (D) may be H, M or L, (E) may be S or U, (F) may be U, H, M, L or E, (G) may be M, L or E, (V) may be XXXX, where X may be A through Z, 0 through 9, "-" or blank.

Model DATA0725B8S(V) series, where (V) may be XXXX, where X may be A through Z, 0 through 9, "-" or blank.

Models DBTA0420B2(A)(V), DBTA0825B2(B)(V), DBTA0825B4(K)(V), DBTA0825B8(K)(V), DATA0838B8U(V), DCTA0938B8(B)(V), DATA1338B8(C)(V) series, where (A) may be U, H, M, L or E, (B) may be U, H or M, (C) may be F, S, U, H, M, L or E, (K) may be U, H or M, (V) may be XXXX, where X may be A through Z, 0 through 9, "-" or blank.

Models B6025B12S(V), T9025B24(A)(V), DB03828B12S(V), DA04015B24(B)(V), DK06025B12S(V), BA07015B05(C)(V), DS07025B12(D)(V), DS08025B24(E)(V), DF08080B12U(V), DS09225B12(F)(V), DS12025B12(F)(V), BATA0515B2U(V), DASA0925B2(G)(V), DESA0938B2(H)(V), DCTA0938B2(I)(V), DATB1238B2M(V), DATA1338B2(J)(V), DATA1338B4G(V), DATA1338B4(J)(V), DBTA1551B8(D)(V) series, where (V) may be XXXX, where X may be A through Z, 0 through 9, "-" or blank, (A) may be H, M or L, (B) may be U, H, M, L, E or X, (C) may be M, L, E or X, (D) may be S, U, H, M, L or E, (E) may be U, H, M or L, (F) may be U, H, M, L or E, (G) may be S, U, H, M or L, (H) may be H, M, L, E or X, (I) may be U, H or M, (J) may be F, S, U, H, M, L or E.

Models DBTA1225B8(Q)(V), DK03510B05(R)(V), DNSA0620B2(S)(V), DFTA0456B2(T)(V), where (Q) may be S, U, H, M, L, (R) may be U, H, M, L, (S) may be S, U, H, M, L, E, (T) may be U, H, M, (V) may be XXXX, where X may be A through Z, 0 through 9, "-" or blank.

Model BAKA9318B4H(V) series, where (V) may be XXXX, where X may be A through Z, 0 through 9, "-" or blank.

Model BATA1025B8S(V) series, where (V) may be XXXX, where X may be A through Z, 0 through 9, "-" or blank.

Models DATA0625B2G(V), DAKA0638B2(B)(V), DAKA0638B4(B)(V), DFTA0656B2(C)(V), BA07015B12(A)-S02, DBTA1225B2(A)(V), DBTA1225B4(A)(V) series, where (A) may be S, U, H, M or L, (B) may be U, H, M or L, (C) may be F, S or U, (V) may be XXXX, where X may be A through Z, 0 through 9, "-" or blank.

Models DASA0420R2(A)(V) series, where (A) may be U, H, M or L, (V) may be XXXX, where X may be A through Z, 0 through 9, "-" or blank.

Models DA06010B05(A)(V), BA12032B24(B)(V), DAKA0310B3(C)(V), DAKA0420B2(D)(V), DAKA0510B3(E)(V), DAKB0625B2(F)(V), DAKB0625B4(G)(V), DASC0715R2(H)(V), DAKB0925B4(C)(V), DASD0925R2(B)(V), BASA1025B2(C)(V), DBTA1551B4(I)(V), DBTA1551B8(J)(V) series, where (A) may be M, L or E, (B) may be H, M or L, (C) may be U, H, M or L, (D) may be F, S, U, H, or M, (E) may be S, U, H, M or L, (F) may be F, S, U, H, M, L or E, (G) may be S, U, H or M, (H) may be U, H, M, L or E, (I) may be S, U, H, M, L or E, (J) may be G or F, (V) may be XXXX, where X may be A through Z, 0 through 9, "-" or blank.

Models DATA0832B2(A)(V), DATA0832B4(A)(V), DATA0832B8(A)(V) series, where (A) may be G, F, S, U, H, M or L, (V) may be XXXX, where X may be A through Z, 0 through 9, "-" or blank.

Models DA05015B05(A)(V), DASA0620B2(B)(V), DSSD0715R2(A)(V), DAKA0825B2(C)(V), DASA0825B2(C)(V), DATA0838B2(D)(V), DAKA0925B2(A)(V), DAKA0925B4(C)(V), DASB0925B2(A)(V), DATA1232B2(A)(V), DATA1232B4(A)(V), DATA1232B8(A)(V), DATC1238R2M(V), DBTB1238B2S(V), DBTB1238B2(E)(V), DBTB1238B4F(V), DBTB1238B4(F)(V), DBTB1238B8F(V), DBTB1238B8(F)(V), DATB1338B2(G)(V), DATB1338B4(G)(V), DATB1338B8(G)(V), DBTA1551B2(H)(V) series, where (A) may be U, H, M, L or E, (B) may be S, U, H, M, L or E, (C) may be U, H, M or L, (D) may be F, S, U or H, (E) may be U, H or M, (F) may be S, U, H or M, (G) may be F, S, U, H, M, L or E, (H) may be H, M, L or E, (V) may be XXXX, where X may be A through Z, 0 through 9, "-" or blank.

Model BNTA0613R2H(V) series, where (V) may be XXXX, where X may be A through Z, 0 through 9, "-" or blank.

Models DBTA0428B2(A)(V), BATB0515B2(B)(V), DASA0610B2(C)(V), BATA0812R5HP00(H), DASB0825B2(D)(V), DATA0838B4(E)(V), DATA0838B8(F)(V), DBTB0838B2S(V), DYT0838B2G(V), DYT0838B2S(V), DASC0925R2(C)(V), DASE0925R2(C)(V), DATA1525B2(G)(V), DATA1525B4(G)(V) series, where (A) may be S, U, H, M or L, (B) may be S, U, H or M, (C) may be U, H, M, L or E, (D) may be U, H, M or L, (E) may be S, U or H, (F) may be S or H, (G) may be S, U, H, M, L, E or X, (H) may be 1 or 2, (V) may be XXXX, where X may be A through Z, 0 through 9, "-" or blank.

Model BATA1015R5H(V) series, where (V) may be XXXX, where X may be A through Z, 0 through 9, "-" or blank.

Models BATA0817R2H(V), BASA0819R5U(V), BASA0819R5H(V), BASA0819R5M(V), BASA0819R5L(V) series, where (V) may be XXXX, each X may be A through Z, 0 through 9, "-" or blank.

Models BATA0715R5H(V), BNTA0815R5H(V) series, where (V) may be xxxx, where x may be A through Z, 0 through 9, "-" or blank.

Models BASA0510R5(X)(V), BASA0720B2(X)(V) series, where (X) may be U, H, M or L, (V) may be xxxx, where x may be A through Z, 0 through 9, "-" or blank.

Model BASA0710R2(X)(V) series, where (X) may be U, H, M or L, (V) may be xxxx, where x may be A through Z, 0 through 9, "-" or blank.

Models DATB0938B8(A)(V), DBTB1551B8G(V) series, where (A) may be U, H or M, (V) may be XXXX, where X may be A through Z, 0 through 9, "-" or blank.

Models BN13391B24F(V), BN22599B48(A)(V), DATA0625B8(B)(V), DATB0625B2(C)(V), DATB0625B4(C)(V), DATB0625B8(C)(V), BATA0832B2U(V), DBTA0838B2G(V), DBTA0838B4G(V), DYTBO925B2F(V), DCTA1238B2S(V), DYTBT1238B2S(V) series, where (A) may be H or M, (B) may be G, F, S or U, (C) may be F, S, U, H, M, L or E, (V) may be XXXX, each X may be A through Z, 0 through 9, "-" or blank.

Models BASA0509R5(A)(V), DSSE0715R2(B)(V), BASA0725R2U(V), BASA0725R2(F)(V), DASC0825B2(A)(V), DASA0925R2(B)(V), DASB0925R2(C)(V), DESA0925R2(B)-001, DESA0925R2(C)-002, DESA0925R2(D)-003, DASA1225B2(D)(V), DASB1225B2(C)(V) series, where (A) may be U, H, M or L, (B) may be U, H, M, L or E, (C) may be H, M, L or E, (D) may be M, L or E, (F) may be H, M or L, (V) may be XXXX, where X may be A through Z, 0 through 9, "-" or blank.

Models DAKA0410B2(a)(V), DAKA0428B2(b)(V), DAKB0428B2(a)(V), DAKA0625B2(a)(V), DAKA0625B4(a)(V), DAKA0825B4(c)(V), DAKA1238B2(a)(V), DAKA1238B4(d)(V), DAKA1238B8(d)(V) series, where (a) may be U, H, M, L or E, (b) may be U, H, M, L, E or X, (c) may be S, U, H, M, L or E, (d) may be H, M, L or E, (e) may be M, L or E, (V) may be XXXX, each X may be A through Z, 0 through 9, "-" or blank.

Model BNKA0310S5M(V) series, where (V) may be XXXX, where X may be A through Z, 0 through 9, "-" or blank.

Models DATA0825B8S(V), DATA0825B8U(V), DATA0825B8H(V), DATA0825B8M(V) series, where (V) may be XXXX, where X may be A through Z, 0 through 9, "-" or blank.

Models BAKA0615R2H(V), BAKB0615R2H(V), BAKA0722B2H(V), BAKA0822B2H(V), BAKA0825B2H(V), BAKA0922B2H(V) series, where (V) may be XXXX, where X may be A through Z, 0 through 9, "-" or blank.

Models BASA0406R5(A)(V), BASA0815R2(C)(V), BASA0817R2(C)(V), DATA0838B8E(V), BAKA0925B2H(V) series, where (A) may be U, H or M, (C) may be M, L or E, (V) may be XXXX, where X may be A through Z, 0 through 9, "-" or blank.

Models BATA0610R5H(V), DYTBO925B8F(V), DYTBO925B8S(V), DYTBO925B8H(V), DYTBO925B8M(V), DYTBO925B8U(V) Series, where (V) may be XXXX, where X may be A through Z, 0 through 9, "-" or blank.

Models DASD0720T2(C)(V), DS04010B24(A)(V), DS08020B48(B)(V), DASA0310R2(C)(V), DASA0510B2(B)(V), DASA0510R2(B)(V), BNTA0712R5H(V), BASA0815R5(D)(V), DASD0825B2(E)(V), BATA0912R5H(V), DAPA1525B8X(V), DAPB1751B8L(V) series, where (A) may be S or U, (B) may be U, H, M, L or E, (C) may be U, H, M or L, (D) may be M, L or E, (E) may be F, S, U, H or M, (V) may be XXXX, where X may be A through Z, 0 through 9, "-" or blank.

Models BASB0510R2(A)(V), DATA0307R5H(V) series, where (A) may be U, H or M, (V) may be XXXX, where X may be A through Z, 0 through 9, "-" or blank.

Models BNTA0610R5H(V), BATA0716R2H(V), BATA0822R2H(V) series, where (V) may be XXXX, where X may be A through Z, 0 through 9, "-" or blank.

Models DS08015R05(A)(V), DASA0815R2(B)(V), DASE0825T2(C)(V), DFTA0880B2U(V), DASA1238B2(D)(V), BNTA2589B8(E)(V), BASA5508R5(C)(V) series, where (A) may be H, M or L, (B) may be U, H, M, L or E, (C) may be U, H, M or L, (D) may be S, U, H, M, L or E, (E) may be H or M, (V) may be XXXX, where X may be A through Z, 0 through 9, "-" or blank.

Models BATA0607R5H(V), BASA0825R2(A)(V), BASB0825R2(A)(V) series, where (A) may be H, M, L or E, (V) may be XXXX, where X may be A through Z, 0 through 9, "-" or blank.

Models BAKA0825R2H(V), BAKA0922R2H(V) series, where (V) may be XXXX, where X may be A through Z, 0 through 9, "-" or blank.

Models DA05015B12S(V), BASA0615R2(A)(V), BASA0714R2(B)(V), BASB0615B2(F)(V), DATB0825B2(G)(V), BASA0819R2(E)(V) series, where (A) may be H, M, L or E, (B) may be U, H, M, L or E, (E) may be U, H, M or L, (F) may be M, or L, (G) may be S, U, H or M, (V) may be xxxx, where x may be A through Z, 0 through 9, "-", or blank.

Models BASA0712R5(A)(V), BASA0609R5(X)(V), BAKA0812R2U(V) series, where (A) may be H, M or L, (X) may be U, H, M or L, (V) may be XXXX, where X may be A through Z, 0 through 9, "-" or blank.

Model DYTBO638B8U(V) series, where (V) may be XXXX, where X may be A through Z, 0 through 9, "-" or blank.

Models DFTA0348B2S(V), DFTA0348B2U(V), DFTA0448B2(A)(V), DFTB0456B2U(V), DFTA0676B4(B)(V), BASB0712R5(C)(V), DASA0715R2(D)(V), BASB0817R2(E)(V) series, where (A) may be S, U, H or M, (B) may be S or U, (C) may be H, M or L, (D) may be U, H, M, L or E, (E) may be M, L or E, (V) may be XXXX, where X may be A through Z, 0 through 9, "-" or blank.

Models DFTA0880Y2U(V), DBTA0328B2(A)(V) series, where (A) may be S, U, H, M, L or E; (V) may be xxxx, where x may be A through Z, 0 through 9, "-" or blank.

Models DA04015B05(A)(V), DS04020B05(A)(V), DASA0410B5(A)(V), DASA0410B2(B)(V), DASA0410R2(A)(V), DASB0410R2(C)(V), DASB0510B2(D)(V), DASA0615R2(E)(V), DASA0820R2(F)(V), DATA0825B2(G)(V), DATA0825B4(G)(V), DASC0925B2(D)(V), BASA1120R2(H)(V) series, where (A) may be U, H, M or L, (B) may be S, U, H, M or L, (C) may be U, H or M, (D) may be H, M, L or E, (E) may be S, U, H, M, L or E, (F) may be U, H, M, L or E, (G) may be S, U, or H, (H) may be M, L or E, (V) may be XXXX, where X may be A through Z, 0 through 9, "-" or blank.

Models DASA0210R5(A)(V), BASA0712R2(B)(V), DBTB1225B8F(V) series, where (A) may be U, H, M or L, (B) may be H, M, L or E, (V) may be XXXX, where X may be A through Z, 0 through 9, "-" or blank.

Models BATA0507R5U(V), BATA0507R5H(V), BATA0812R5H(Y), DBTA0638B2(A)(V), DBTA0638B4(A)(V), DBTA0638B8(A)(V) series, where (A) may be S, U, H, M or L, (V) may be XXXX, where X may be A through Z, 0 through 9, "-" or blank, (Y) may be XXXX, where X may be A through Z, 0 through 9, "-" or blank, except for P001 and P002.

Models DATA0420B2(A)(V), DASB0815B2(B)(V), DV09238B48S(V), DBTB1225B2F(V) series, where (A) may be S, U, H, M or L, (B) may be U, H, M, L or E, (V) may be XXXX, where X may be A through Z, 0 through 9, "-" or blank.

Models DBTA0420B5(A)(V), DBTB0428B2(B)(V), DASB0815R2(C)(V), BATA1024B2H(V), BNTA1025B2U(V), DYTFT1238B8H(V), DATC1551B8S(V) series, where (A) may be M, L, E or X, (B) may be S, U, H or M, (C) may be U, H, M, L or E, (V) may be XXXX, where X may be A through Z, 0

through 9, "-" or blank.

Models BATA0507R5M(V), DFTB0880B8(A)(V), DBTA1338B8H(V), BNTA1769Y8U(V) series, where (A) may be U, H, M, or L; and (V) may be XXXX, where X may be A through Z, 0 through 9, "-" or blank.

Models BASA0407R5(A)(V) series, where (A) may be S, U, or H; and (V) may be XXXX, where X may be A through Z, 0 through 9, "-" or blank.

Models DBKA0456R2(A)(V), BASC0712R2(B)(V), BASB0715R2(C)(V), DASA0720B2(C)(V), BATA0810R5H(V), BASA0920R2(D)(V), BAKB0922R2H(V), DAKA0938R4(C)(V), BASB1025B2(E)(V), and BASA1125R2(D)(V) series, where (A) may be U, H, M, or L; (B) may be H, M, or L; (C) may be U, H, M, or L; (D) may be U, H, or M; (E) may be U, H, M, L, or E; and (V) may be XXXX, where X may be A through Z, 0 through 9, "-" or blank.

Model BASB1125R2(A)(V) series, where (A) may be U, H or M; and (V) may be XXXX, where X may be A through Z, 0 through 9, "-" or blank.

Models DASF0925R2(A)(V), DASG0925R2(B)(V) series, where (A) may be H, M, L or E; (B) may be U, H or M; and (V) may be XXXX, where X may be A through Z, 0 through 9, "-" or blank.

Model BASA1225R2(A)(V) series, where (A) may be U, H, or M; and (V) may be XXXX, where X may be A through Z, 0 through 9, "-" or blank.

Models DA06010B24(A)(V), DV09238B48(B)(V), DATA0307R2S(V), DAKA0428R2(C)(V), DBTB0428B2F(V), DASA0510B5(A)(V), DBTC0638B2(C)(V), DASC0815B2(D)(V), DYTF1238B4(C)(V) series, where (A) may be U, H, M or L; (B) may be U or H; (C) may be S, U, H or M; (D) may be U, H, M, L or E; and (V) may be XXXX, where X may be A through Z, 0 through 9, "-" or blank.

Model DATA1551B8MP002 and Models DBTD1551B8U(V) series, where (V) may be XXXX, where X may be A through Z, 0 through 9, "-" or blank.

**Low voltage fans**, Models 1225-12, -24, 1238-12 followed by H, L or M, may be followed by H, L or M, followed by B or S, may be followed by A, B, C, T or X, may be followed by one suffix letter.

Models 0420-5(B)(C)(D), 0420-12(B)(C)(D), 0615-12(B)(C)(D), 0615-24(B)(C)(D), 0620-12(B)(B)(D), 0620-24(B)(B)(D), 0625-12(B)(B)(D), 0625-24(B)(B)(D), 0815-12(B)(C)(D), 0815-24(B)(C)(D), 0825-12(B)(C)(D), 0825-24(B)(C)(D), 0925-12(B)(C)(D)N7, 0925-12(B)(C)(D)B7, 0925-24(B)(C)(D)N7, 0925-24(B)(C)(D)B7, 1225-12(B)(B)(D)N7, 1225-12(B)(B)(D)B7, 1225-24(B)(B)(D)B7, 1225-24(B)(B)(D)N7, 1238-12(B)(B)(D)B3, 1238-12(B)(B)(D)B7, 1238-24(B)(B)(D)B3, 1238-24(B)(B)(D)B7, 5215-5(B)(B)(D), 5215-12(B)(B)(D), where (A) may be 5, 12 or 24, (B) may be H, L or M, (C) may be B or S, (D) may be A, AA, B, BA, T, TA, TL or X.

Model DS8038-12HBP(A)-(B) Series, where (A) may be blank, A or L, (B) may be blank or 01 through 99; Model D(Y)12038(Z)12(C)(V) series, where (Y) may be A through Z or 0 through 9, (Z) may be A, B, C, G, S, T, R or P, (C) may be U, H, M, L or E, (V) may be XXXX, where X may be A through Z, 0 through 9, "-" or blank.

Models B(Y)07525(Z)12(X)(V), B(Y)07525(Z)24(X)(V), D(Y)08015(Z)24(W)(V) series, where (Y) may be A through Z or 0 through 9, (Z) may be A, B, C, G, S, T, R or P, (X) may be H, M or L, (W) may be U, H, M, L or E, (V) may be XXXX, where X may be A through Z, 0 through 9, "-" or blank.

Models D(Y)06013(Z)12(Q)(V), B(Y)04506(Z)05(E)(V) Series, where (Q) may be U, H, M, L or E, (E) may be H, M or L, (Y) may be A through Z or 0 through 9, (Z) may be A, B, C, G, S, T, R or P, (V) may be XXXX, where X may be A through Z, 0 through 9, "-" or blank.

Models B(Y)04812(Z)05H(V), B(Y)06512(Z)05H(V), D(Y)06076(Z)12U(V), B(Y)12054(Z)24F(V), B(Y)12054(Z)24S(V), B(Y)12054(Z)24U(V), B(Y)12054(Z)24H(V) Series, where (Y) may be A through Z or 0 through 9, (Z) may be A, B, C, G, S, T, R or P, (V) may be XXXX, where X may be A through Z, 0 through 9, "-" or blank.

Models DD12038B12(E)(V), DS12038(Z)12(F)(V), D(Y)08020(Z)12(D)(V), D(Y)17251(Z)48(E)(V), DA17251B12H(V), DA17251B12M(V), DA17251B12L(V), DA17251B24(E)(V) Series and Model BN06015B12HP003, where (D) may be U, H, M, L, E or X, (E) may be U, H, M or L, (F) may be U, H, M, L or E, (Y) may be A through Z or 0 through 9, (Z) may be A, B, C, G, S, T, R or P, (V) may be XXXX, where X may be A through Z, 0 through 9, "-" or blank.

Models D(Y)12738(Z)12(A)(V), F7015(Z)12S(V), B(Y)04008(Z)05(B)(V), D(Y)09238(Z)24(B)(V), D(Y)09225T12(C)(V), D(Y)07038(Z)12(D)(V), 2(Y)12038(Z)48(E)(V), D(Y)04056(Z)12U(V) Series, where (A) may be F, S, U, H, M, L or E, (B) may be H, M or L, (C) may be U, H, M, L or E, (D) may be U, H, M, L, E or X, (E) may be U, H or M, (Y) may be A through Z or 0 through 9, (Z) may be A, B, C, G, S, T, R or P, (V) may be XXXX, where X may be A through Z, 0 through 9, "-" or blank.

Model DD12038(Z)48(A)(V) series, where (A) may be H, M, L or E, (Z) may be A, B, C, G, S, T, R or P, (V) may be XXXX, where X may be A through Z, 0 through 9, "-" or blank.

Models D(Y)05020(Z)12(A)(V), D(Y)04020(Z)12(A)(V), B(Y)06015(Z)05(B)(V), B(Y)06015(Z)12(B)(V), D(Y)06038(Z)24(C)(V), D(Y)08025(Z)12H(V), 2(Y)12038(Z)24(D)(V) Series, where (Y) may be A through Z or 0 through 9, (Z) may be A, B, C, G, S, T, R or P, (A) may be S, U, H, M or L, (B) may be H, M or L, (C) may be H, M, L, E or X, (D) may be U, H, M or L, (V) may be XXXX, where X may be A through Z, 0 through 9, "-" or blank.

Model B(Y)08825B12H(V) series where (Y) may be A through Z or 0 through 9, (V) may be XXXX, where X may be A through Z, 0 through 9, "-" or blank.

Models D(Y)04010(Z)12X(V), D(Y)04209(Z)12H(V), DD05010(Z)05U(V), DD05010(Z)12(R)(V), DN05010(Z)12X(V), DA07015(Z)12(Q)(V), DE07015(Z)12(Q)(V), DV04028(Z)24(Q)(V), BA07530(Z)24H(V), DB04028(Z)24(R)(V), 2(Y)09238(Z)12(W)(V), 2(Y)09238(Z)24(W)(V), 2(Y)09238(Z)48(W)(V), D(Y)15051(Z)48S(V), D(Y)15051(Z)48(Q)(V), DB17251(Z)48S(V), DB17251(Z)48(Q)(V), D(Y)14050(Z)24(R)(V), D(Y)14050(Z)48(R)(V), 2(Y)12038(Z)12(I)(V), D(Y)08025(Z)48(T)(V) series, where (Y) may be A through Z or 0 through 9, (Z) may be A, B, C, G, S, T, R or P, (W) may be S, U, H, M, L or E, (R) may be U, H, M or L, (Q) may be U, H, M, L or E, (I) may be U, H or M, (T) may be S, U, H or M, (V) may be XXXX, where X may be A through Z, 0 through 9, "-" or blank.

Model DB04028(Z)12U(V) series, where (Z) may be A, B, C, G, S, T, R or P, (V) may be XXXX, where X may be A through Z, 0 through 9, "-" or blank.

Models BASB0817R5M(V), BASB0817R5L(V), BASB0817R5E(V), BASB1120R2U(V), BASB1120R2H(V), BASB1120R2M(V) series, where (V) may be

XXXX, where X may be A through Z, 0 through 9, "-" or blank.

Models DBTB0638B8H(V), BASB0815R2(X)(V), DATB1238B8(Y)(V) series, where (X) may be U, H or M; (Y) may be F, S or U; (V) may be XXXX, where X may be A through Z, 0 through 9, "-" or blank.

Models DS06025B24(Y)(V), and BASA1025R2(X)(V) series, where (X) may be U, H or M; (Y) may be U, H, M or L; (V) may be XXXX, where X may be A through Z, 0 through 9, "-" or blank.

Model DB12038B24HS009; and Models BA18080B24U(V), DAKA0825R4(A)(V), DYTB0838B2(B)(V), BAKA1232B2(B)(V), and BNTA32C0B8L(V) series, where (A) may be U, H, M, or L; (B) may be U, H, or M; (V) may be xxxx, where x may be A through Z, 0 through 9, "-", or blank.

Models DYTB0420B2(A)(V), and DBTB2070B8S(V) series, where (A) may be U, H, M, L or E; (V) may be xxxx, where x may be A through Z, 0 through 9, "-", or blank.

Marking: Company name or "DATECH", model designation and Recognized Component Mark for Canada 

Last Updated on 2011-09-26

[Questions?](#)

[Print this page](#)

[Notice of Disclaimer](#)

[Page Top](#)

[Copyright © 2011 Underwriters Laboratories Inc.®](#)

The appearance of a company's name or product in this database does not in itself assure that products so identified have been manufactured under UL's Follow-Up Service. Only those products bearing the UL Mark should be considered to be Listed and covered under UL's Follow-Up Service. Always look for the Mark on the product.

UL permits the reproduction of the material contained in the Online Certification Directory subject to the following conditions: 1. The Guide Information, Designs and/or Listings (files) must be presented in their entirety and in a non-misleading manner, without any manipulation of the data (or drawings). 2. The statement "Reprinted from the Online Certifications Directory with permission from Underwriters Laboratories Inc." must appear adjacent to the extracted material. In addition, the reprinted material must include a copyright notice in the following format: "Copyright © 2011 Underwriters Laboratories Inc.®"

An independent organization working for a safer world with integrity, precision and knowledge.

